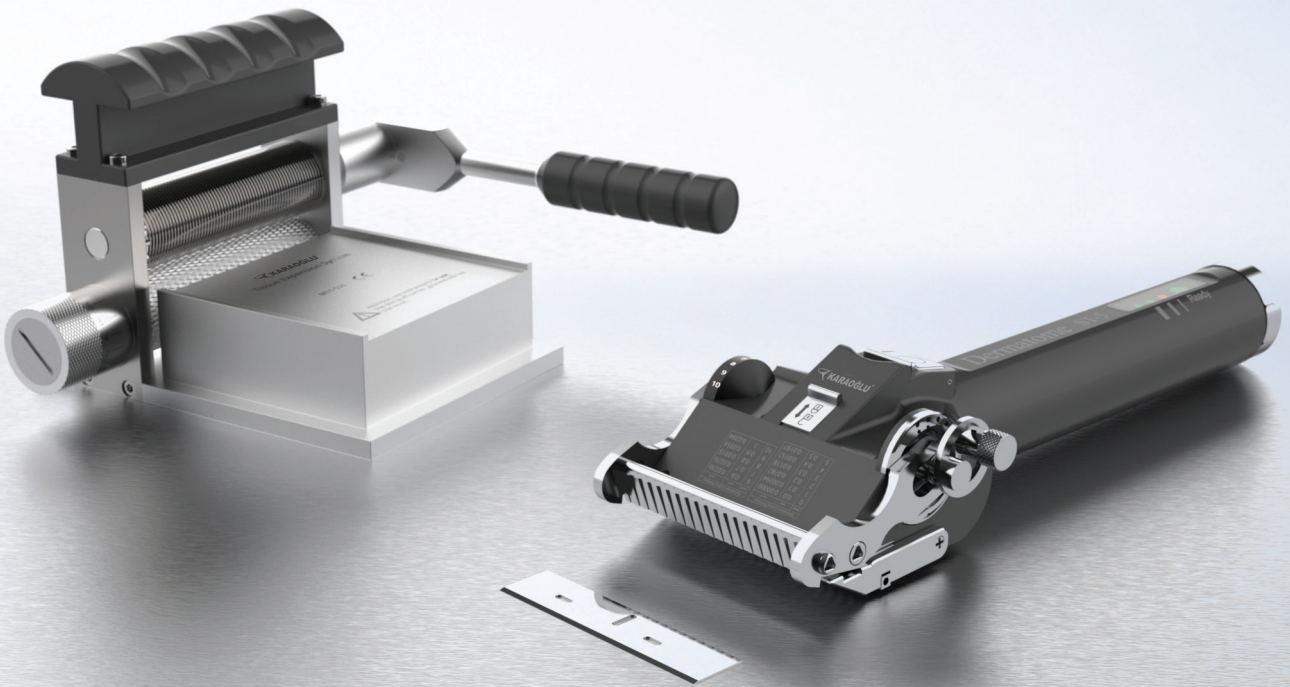




DERMATOME ST-5 & SKIN GRAFT MESHER

BATTERY OPERATED SURGICAL POWER TOOLS



Precision In Every Layer
Masterful Grafting At Your Fingertips

Customizable Cutting Settings • Ergonomic and Lightweight Design • Enhanced Skin Grafting

- High Power
- New Generation Cutting Technology
- New Generation Surgical Motor Technology
- Li-ion Battery Technology

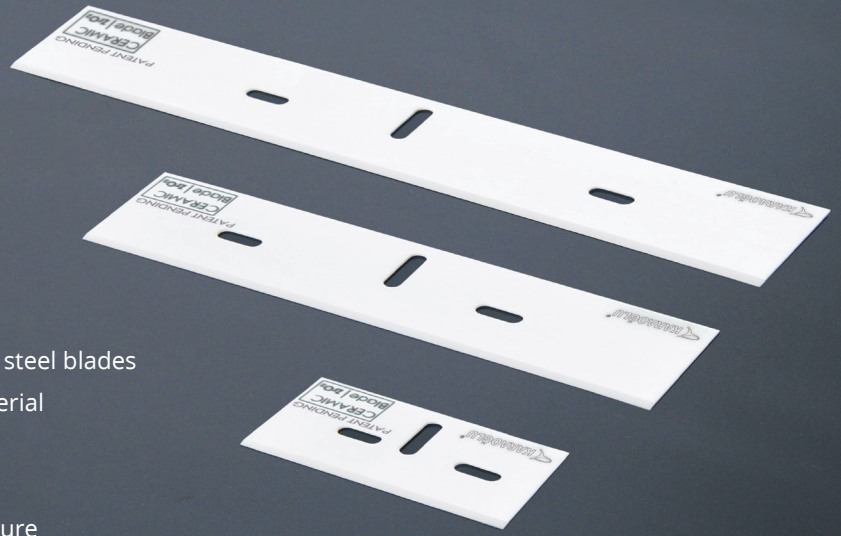


DERMATOME ST-5

- Special designed hand pieces for different operation variations
- Small, medium and large head designs provides precise cutting results in different areas
- Light weight and cordless, battery operated ergonomic system offers mobility
- Quick, easy and safe blade replacement mechanism
- 10 level for cutting thickness adjustment with 5 main and 5 intermediate level for sensitive results
- High quality dermatome blades for precise and smooth consequences
- Provides 40 mm, 80 mm and 120 mm cutting width options for standard use (With the help of width reduction clamp, it allows cutting in special dimension)

Ceramic Dermatome Blade

- Provides up to 10 times sharpness than traditional steel blades
- Biocompatible zirconium oxide (ZrO2) ceramic material
- Autoclavable
- Not affected by chemicals
- Provides measurement stability with its rigid structure



Green, yellow and red lights indicate charging status.

White light indicates that the motor is ready for operation.



Mechanical structure of Dermatome ST-5 Handpieces provides users non-restrictive washing and disinfection.



The use of width-reducing clamps on the dermatome head allows cutting of smaller graft widths.



POWER BOX



M10-502
Power Box

- Powerful DC motor technology
- Battery type: Li-ion
- Battery capacity: 700 mAh
- Voltage: 12.6 Volts
- Charging time: 45 min
- Not Autoclavable
- Ø 30 x 195 mm / 300 g



- High technology Li-ion battery and Swiss made surgical motor
- Indicator light technology enables to monitor battery capacity without removing power box by user
- White indicator light informs user about not to put the product in autoclave when power box is not removed
- Non-sterile battery, motor and electronical parts increases durability of product life
- Extended battery life
- Flashing light on power box shows that the device is ready for use and also warns the user about preventing from putting into the sterilization device



M10-504
Autoclavable sterile funnel
for aseptic battery loading

- Steam sterilisable
- Ø 45 x 35 mm / 35 g



BATTERY CHARGING UNITS



M10-503

Charger unit for 2 battery

- Main voltage 100-240 Volts, 50-60 Hz
- Charging current 2.3 A (x2)
- Charging voltage 12.6 Volts
- Protections: Short circuit / Overload / Over voltage
- Charging indicator led
- Battery not included
- 175 x 190 x 100 mm / 1400 g



M10-505

Charger unit for 1 battery

- Main voltage 100-240 Volts, 50-60 Hz
- Charging current 2.3 A
- Charging voltage 12.6 Volts
- Protections: Short circuit / Overload / Over voltage
- Charging indicator led
- Battery not included
- 175 x 120 x 100 mm / 850 g

DERMATOME SMALL HANDPIECE (40 mm)

Dermatome Level	Cutting mm	Thickness inch
0	0.0	0.00000
1	0.1	0.00394
2	0.2	0.00787
3	0.3	0.0118
4	0.4	0.0157
5	0.5	0.0197
6	0.6	0.0236
7	0.7	0.0276
8	0.8	0.0315
9	0.9	0.0354
10	1	0.0394



M10-400

Dermatome Small Handpiece (40 mm)

- Autoclavable
- 16.000 cpm
- 290 x 65 x 50 mm / 730 g



②

M7-104

Spare blades (10 ea)
One side cutting only.
Stainless steel

- 41 x 18,5 x 0,40 mm



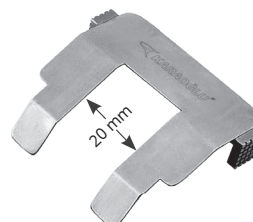
②

M7-104C

Ceramic spare blade (1 piece)
(Ultrasharp)

One side cutting only.
Zirconium oxide (ZrO2)
Patent pending

- 41 x 18,5 x 0,40 mm



M10-400A

Width reducing clamp (20 mm)

DERMATOME HANDPIECE (80 mm)

Dermatome Level	Cutting mm	Thickness inch
0	0.0	0.00000
1	0.1	0.00394
2	0.2	0.00787
3	0.3	0.0118
4	0.4	0.0157
5	0.5	0.0197
6	0.6	0.0236
7	0.7	0.0276
8	0.8	0.0315
9	0.9	0.0354
10	1	0.0394



M10-500

Dermatome Handpiece (80 mm)

- Autoclavable
- 16.000 cpm
- 290 x 105 x 50 mm / 1024 g



②

M7-105

Spare blades (10 ea)

One side cutting only.
Stainless steel

- 81 x 18,5 x 0,40 mm



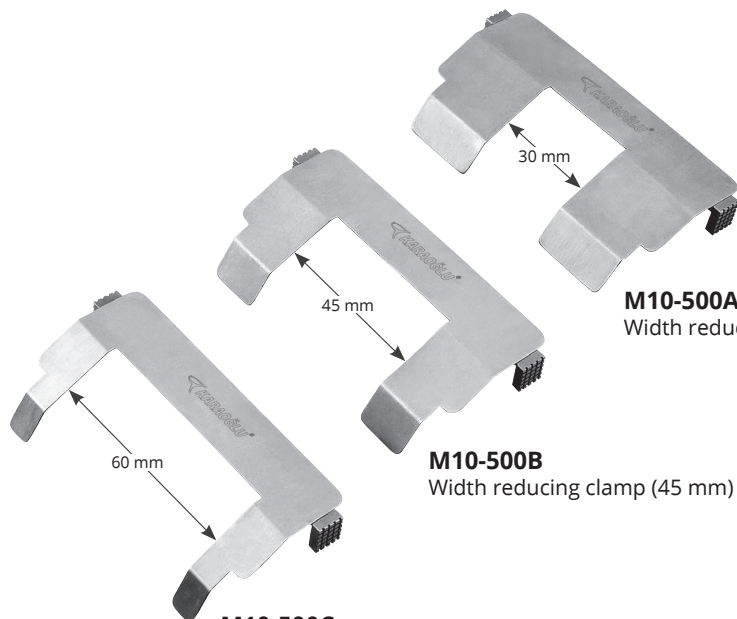
②

M7-105C

Ceramic spare blade (1 piece)
(Ultrasharp)

One side cutting only.
Zirconium oxide (ZrO2)
Patent pending

- 81 x 18,5 x 0,40 mm



M10-500A

Width reducing clamp (30 mm)

M10-500B

Width reducing clamp (45 mm)

M10-500C

Width reducing clamp (60 mm)

DERMATOME LARGE HANDPIECE (120 mm)

Dermatome Level	Cutting mm	Thickness inch
0	0.0	0.00000
1	0.1	0.00394
2	0.2	0.00787
3	0.3	0.0118
4	0.4	0.0157
5	0.5	0.0197
6	0.6	0.0236
7	0.7	0.0276
8	0.8	0.0315
9	0.9	0.0354
10	1	0.0394



- M10-600**
Dermatome Large Handpiece (120 mm)
- Autoclavable
 - 16.000 cpm
 - 290 x 145 x 50 mm / 1360 g



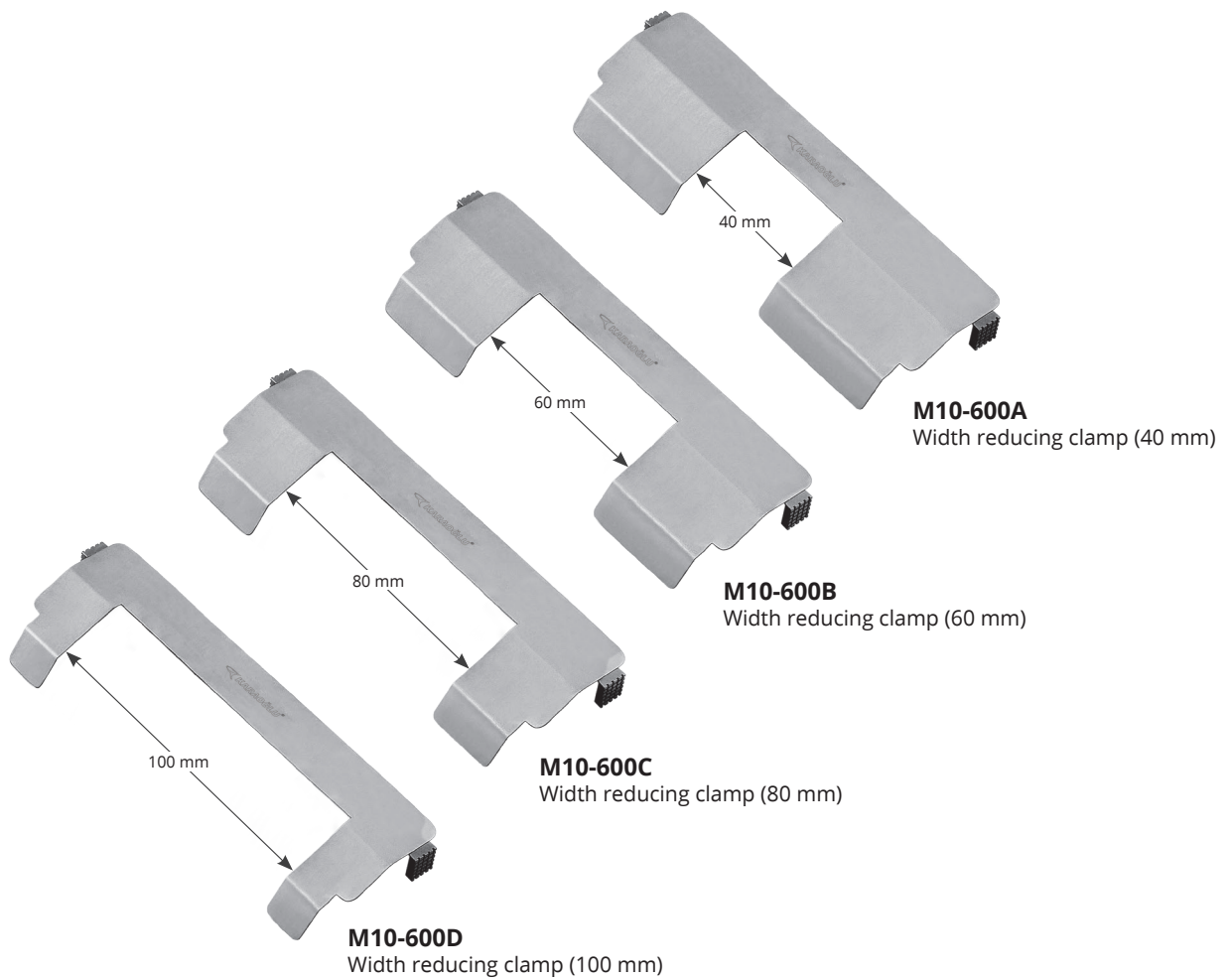
- M7-106**
Spare blades (10 ea)
One side cutting only.
Stainless steel
- 121,5 x 18,5 x 0,40 mm



- M7-106C**
Ceramic spare blade (1 piece)
(Ultrasharp)
One side cutting only.
Zirconium oxide (ZrO2)
Patent pending
- 121,5 x 18,5 x 0,40 mm



WIDTH REDUCING CLAMP FOR LARGE DERMATOME



DERMATOME BATTERY SET



M10-510

Dermatome Battery Set

Set Content

M10-500	Dermatome Handpiece
M10-502	Power box
M10-504	Autoclavable sterile funnel for aseptic battery loading
M10-505	Charger unit for 1 battery
M7-105C	Ceramic spare blade
M10-500A	Width reducing clamp (30 mm)
M10-500B	Width reducing clamp (45 mm)
M10-500C	Width reducing clamp (60 mm)
M14-816	Spray oil
M10-530	PPSU attachment stand
K3-762	Lid
K3-751	Basket
K6-340	Perforated lid
K6-307	Box, non perforated



M10-505
Charger unit for 1 battery



M10-502
Power box

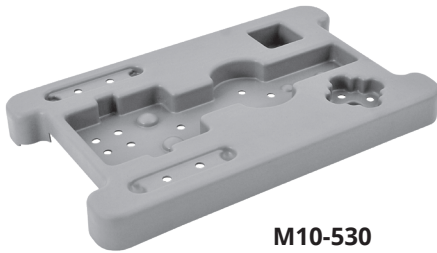


M10-500A (30 mm)
M10-500B (45 mm)
M10-500C (60 mm)
Width reducing clamp

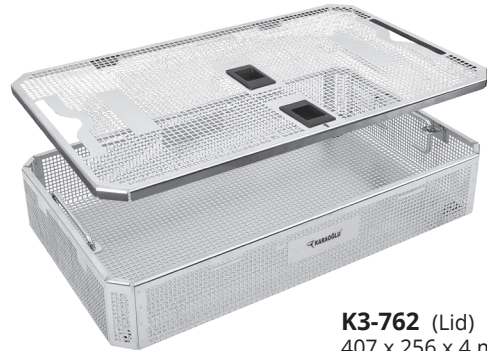


M14-816
Spray oil

ACCESSORIES



M10-530
PPSU attachment stand



K3-762 (Lid)
407 x 256 x 4 mm

K3-751
Basket, made from
stainless steel sheet
405 x 253 x 110 mm



K6-340
Perforated Lid, Standard Model
460 x 285 mm

K6-307
Box, non perforated
475 x 272 x 138 mm

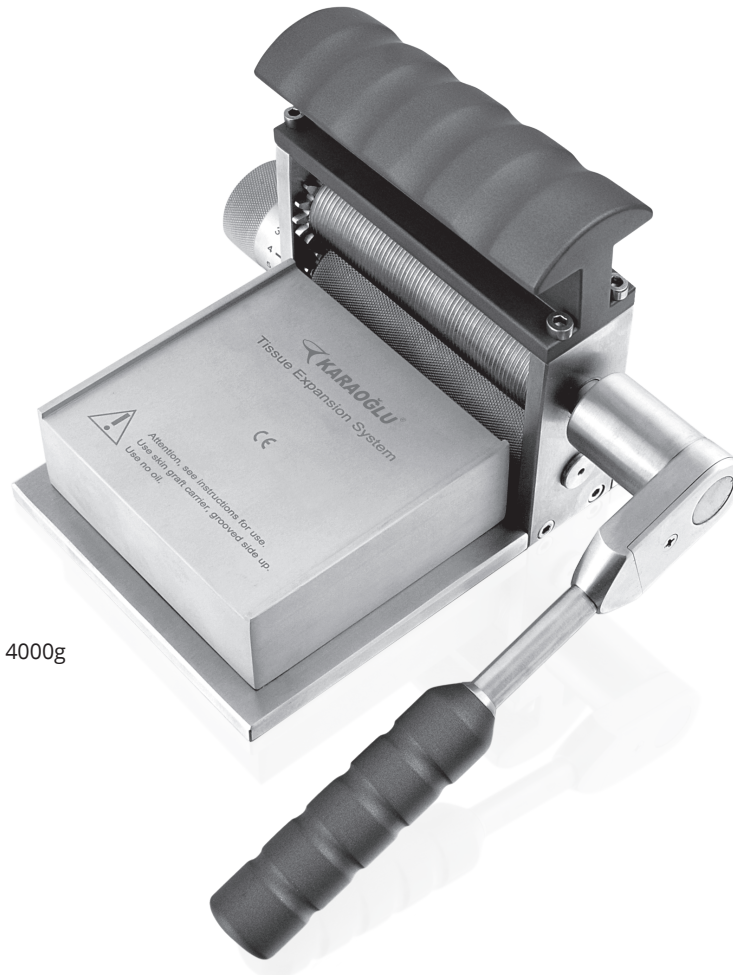


M14-816
Spray oil



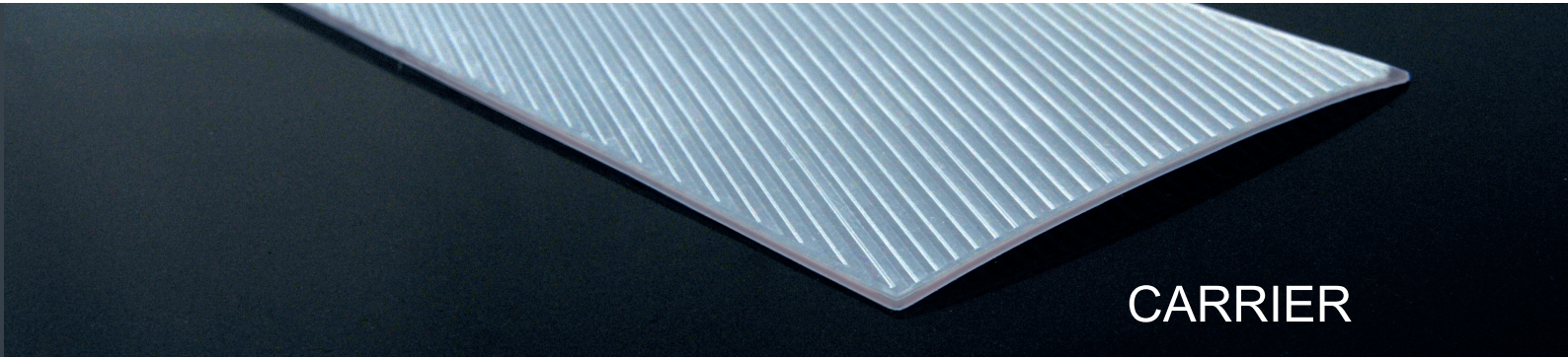
- Guides for Graft Carrier
- Ratchet Handle for Easy Operation
- Graft Thickness Adjustment (0-1,5 mm)

SKIN GRAFT MESHER



M11-500G
Skin Graft Mesher
205 x 165 x 120 mm / 4000g

- Single cutter cuts skin graft into geometrical shaped mesh & enlarges skin surface
- Graft expansion predetermined by graft carrying plates, eliminates the need to change the cutter during operation
- Continuous feed design prevents graft carrying plate from being loaded incorrectly and allows multiple plates to be used without interruption
- Graft thickness adjustment feature allows expansion on thin and thick grafts
- Easy availability of replacement parts

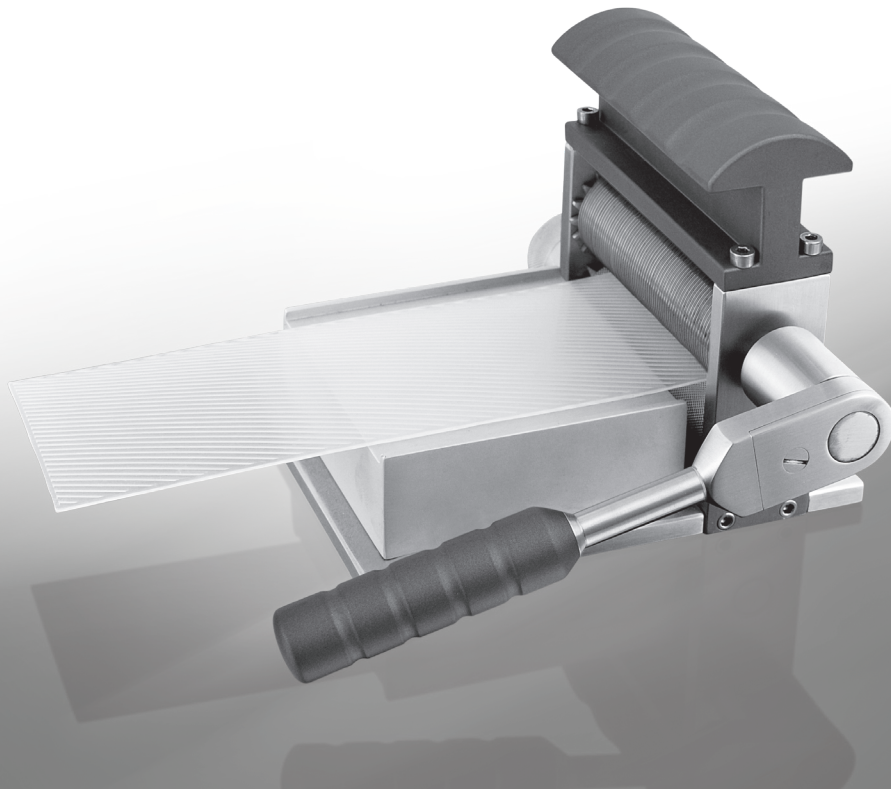


CARRIER



M11-600 Skin graft carrier > 1,5:1 (Box of 20)

M11-605 Skin graft carrier > 3:1 (Box of 20)



CONTAINER SET FOR STERILIZATION



K8-123V
Lid, B3 Barrier Model
585 x 285 mm

K6-107
Container, non perforated
600 x 272 x 138 mm



K8-343V
Lid, B3 Barrier Model
460 x 285 mm

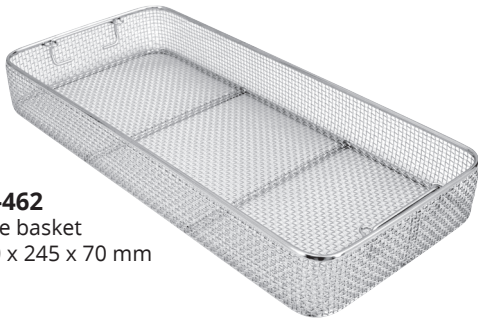
K6-307
Container, non perforated
475 x 272 x 138 mm



K3-742
Basket made from
stainless steel sheet (with stand)
540 x 253 x 80 mm



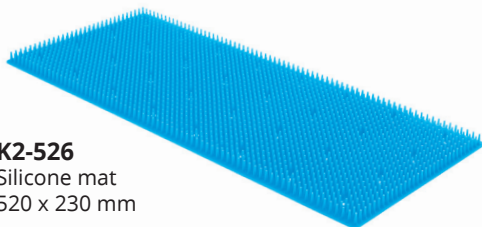
K3-750
Basket made from
stainless steel sheet (with stand)
405 x 253 x 80 mm



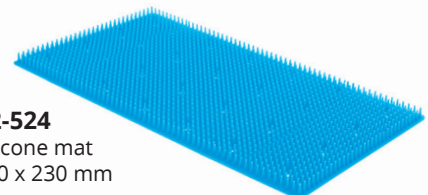
K2-462
Wire basket
540 x 245 x 70 mm



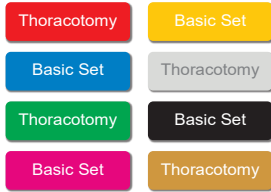
K2-1502
Wire basket
405 x 245 x 70 mm



K2-526
Silicone mat
520 x 230 mm



K2-524
Silicone mat
380 x 230 mm

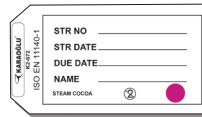


code	color
K2-700	Red
K2-701	Blue
K2-702	Green
K2-703	Yellow
K2-704	Grey
K2-705	Black
K2-706	Pink
K2-707	Orange

Identification labels (aluminium)
Coloured identification labels
Engraved to your specifications
Maximum 16 letters



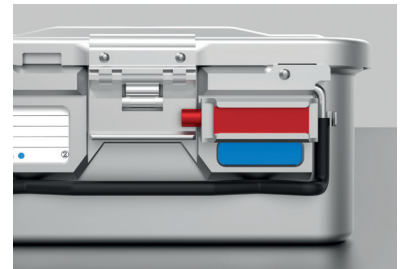
K2-673
Labels (paper)
100 pcs. With indicator.
For small size and special
containers



K2-672
Labels (paper)
100 pcs. With indicator.
For full and half size containers



K1-900
Modular Auto Lock Mechanism (2 Pcs)



K2-660 red
Security seal
100 pcs made of plastic



K2-740
Single use paper
filter 100 pcs
with indicator.
Aygün mark.



KARAOĞLU CERRAHİ ALETLER

İstiklal Mah. İlkadim Sanayi Sitesi 58. Sok.
No:77 TEKKEKÖY/SAMSUN

T : +90 (362) 238 6104 - +90 555 013 6105
F : +90 (362) 238 5591

info@karaoglucerrahi.com.tr
karaoglucerrahi.com.tr