



KARINCA 208

BATTERY OPERATED (MODULAR SYSTEM)
SURGICAL POWER TOOLS



Elevate Your Surgical Performance

Ergonomic Design • High Power and Reliability • Advanced Machining Technology • Li-ion Battery Technology

KARINCA 208

Battery Operated (Modular System)



KARINCA 208

- Light weight Karınca 208 provides efficient and reliable cutting performance with new generation powerful motor;
- One handpiece solution for reaming, high speed drilling with high torque performance;
- Lithium-ion battery technology provides consistent power during the operation;
- Easy handling and ergonomic design of Karınca 208 ensures reliable and better controlled operation results;
- Efficient torque for acetabular reaming;
- Karınca 208 is an innovative new generation power tool with high quality engineering materials;
- Providing efficiency with engineering solutions;
- Extended battery life;
- Comfortable ergonomic design;
- Easy attachment assembly;
- High speed drilling and oscillating.

- Less Weight, High Power
- Next Generation Cutting Technology
- New Generation Surgical Motor Technology
- Li-ion Battery Technology



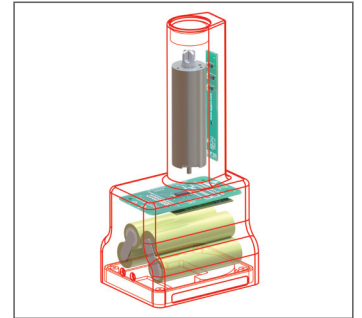
Karınca 208 power box records all data about usage for technical service information.

Moreover the system provides users to observe battery level without removing the power box.

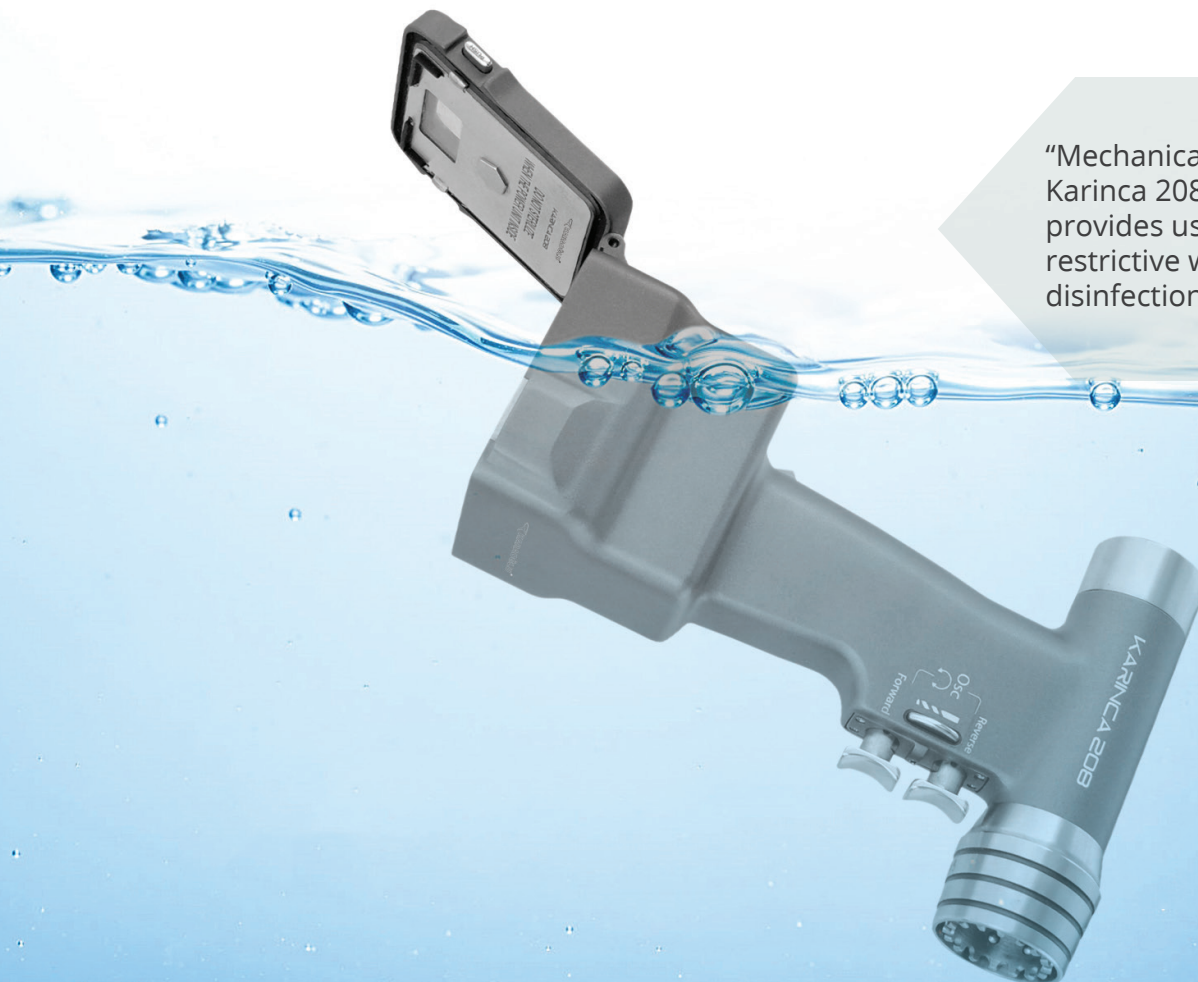
Karınca 208 can also provide information about battery process cycles like how many times the battery is half charged or fully charged and total operation time in hours, minutes, seconds as well.



Power box oled screen enables users to indicate battery capacity by pressing the test button.



Battery, motor and all electronic components are combined together and exempt from sterilization by aim of increasing life time of the device



"Mechanical structure of Karınca 208 Handpieces provides users non-restrictive washing and disinfection."

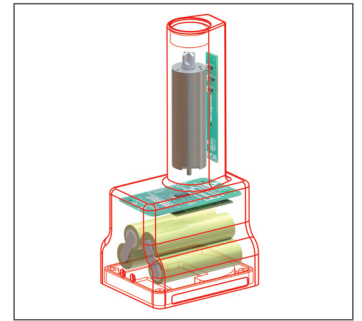
BATTERY CHARGING UNITS



Karinca 208 power box records all data about usage for technical service information. Moreover the system provides users to observe battery level without removing the power box. Karinca 208 can also provide information about battery process cycles like how many times the battery is half charged or fully charged and total operation time in hours, minutes, seconds as well.



Power box oled screen enables users to indicate battery capacity by pressing the test button.



Battery, motor and all electronical components are combined together and exempt from sterilization by aim of increasing life time of the device



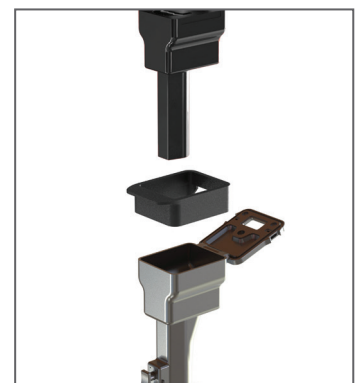
M208-210
Power box

- Powerful brushless DC motor technology
- Li-ion Battery Technology
- Battery capacity: 2.5 Ah
- Voltage: 14.8 Volts
- Integrated oled screen and audible alert notification
- Not autoclavable
- 75 x 61 x 160 mm / 465 g



M206-212
Autoclavable sterile funnel
for aseptic battery loading

- Steam sterilisable
- 30 x 74 x 104 mm / 55 g



Sterile funnel

**M206-226**

Charger unit for 1 battery

- Main voltage 100-240 Volts, 50-60 Hz
- Charging current 2 A
- Charging voltage 16.8 Volts
- Protections: Short circuit / Overload / Over voltage
- Charging indicator led
- Battery not included
- 130 x 250 x 130 mm / 1300 g

**M206-227**

Charger unit for 2 batteries

- Main voltage 100-240 Volts, 50-60 Hz
- Charging current 2 A (x2)
- Charging voltage 16.8 Volts
- Protections: Short circuit / Overload / Over voltage
- Charging indicator led
- Battery not included
- 230 x 250 x 130 mm / 2150 g

**M206-229**

Charger unit for 4 batteries

- Main voltage 100-240 Volts, 50-60 Hz
- Charging current 2 A (x4)
- Charging voltage 16.8 Volts
- Protections: Short circuit / Overload / Over voltage
- Charging indicator led
- Battery not included
- 430 x 250 x 130 mm / 3850 g

HANDPIECE



M208-200

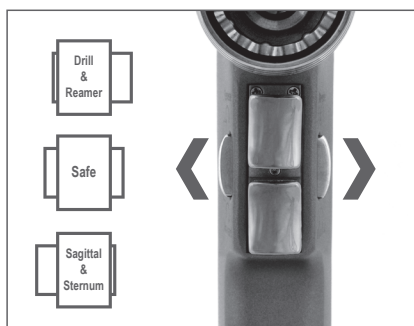
Hexa - Function Handpiece

Dual trigger system for speed, direction and oscillation control.

Steam sterilisable

Cannulated Ø 4 mm

77 x 133 x 215 mm / 990 g



Drill / reamer and sagittal / sternum options in one-handpiece



Forward, reverse and oscillation mode options provide versatile alternatives to the users.



Low / high speed options for both sagittal / sternum modes



DRILL ATTACHMENTS

M208-308

Drill attachment with keyed chuck

Ø4 mm Cannulated
Ø 1.0 mm - 4.0 mm
900 rpm / 4 Nm
30 x 113 mm / 325 g



M8-473
Chuck key
for M208-308

M208-309

Drill attachment with keyed chuck

Ø4 mm Cannulated
Ø 1.0 mm - 6.35 mm
900 rpm / 4 Nm
30 x 126 mm / 370 g



M7-250
Chuck key
for M208-309

M208-313

Drill attachment with hybrid chuck
Both keyed and keyless operation

Ø4 mm Cannulated
Ø 0.3 mm - 3 mm
900 rpm / 4 Nm
30 x 130 mm / 395 g

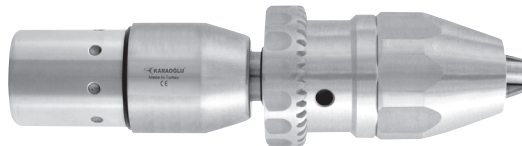


M7-253
Chuck key
for M208-313

M208-310

Drill attachment with hybrid chuck
Both keyed and keyless operation

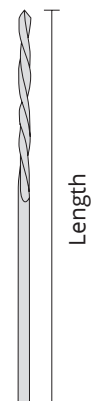
Ø4 mm Cannulated
Ø 1.0 mm - 7.4 mm
900 rpm / 4 Nm
34 x 142 mm / 485 g



M7-252
Chuck key
for M208-310

DRILL BITS

Code	(Ø) Diameter mm	Length mm
M7-500	1.5	60
M7-501	2.0	100
M7-502	2.5	100
M7-503	2.7	100
M7-504	3.0	100
M7-505	3.2	100
M7-506	3.5	100
M7-507	4.0	110
M7-508	4.5	130
M7-509	5.0	160
M7-510	6.0	160





SHANK DRILL BIT ATTACHMENTS

M208-360

Attachment for SQUARE shank

900 rpm / 4 Nm
30 x 114 mm / 270 g



SQUARE



M208-361

Attachment for AO shank

900 rpm / 4 Nm
30 x 106 mm / 260 g



AO



M208-362

Attachment for TRINKE shank

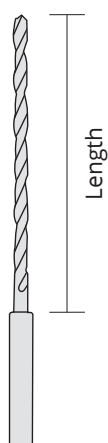
900 rpm / 4 Nm
30 x 104 mm / 270 g

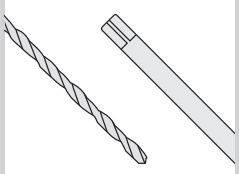
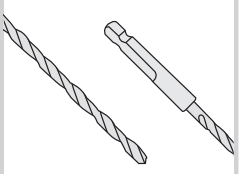
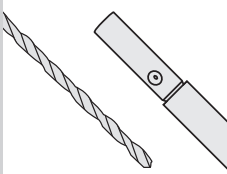


TRINKE



SHANK DRILL BITS

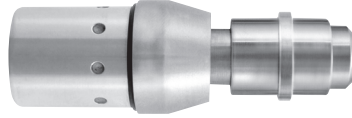


		SQUARE	AO	TRINKE
Length mm	(Ø) Diameter mm			
38	1.5	M7-520	M7-540	M7-560
45	2.0	M7-521	M7-541	M7-561
53	2.5	M7-522	M7-542	M7-562
57	2.7	M7-523	M7-543	M7-563
57	3.0	M7-524	M7-544	M7-564
57	3.2	M7-525	M7-545	M7-565
65	3.5	M7-526	M7-546	M7-566
70	4.0	M7-527	M7-547	M7-567
70	4.5	M7-528	M7-548	M7-568
95	5.0	M7-529	M7-549	M7-569
120	6.0	M7-530	M7-550	M7-570

M103-375

Attachment for OSTEO shank

Ø4 mm Cannulated
175 rpm / 20 Nm
30 x 89 mm / 225 g

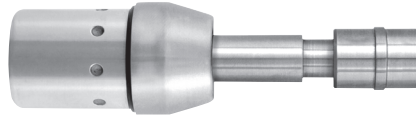


OSTEO

M103-376

Attachment for DHS shank

Ø4 mm Cannulated
175 rpm / 20 Nm
30 x 97 mm / 220 g

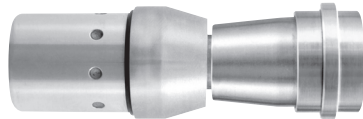


DHS

M103-377

Attachment for AO-PROTEK shank

Ø4 mm Cannulated
175 rpm / 20 Nm
30 x 85 mm / 260 g

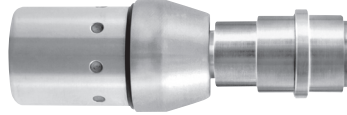


AO-PROTEK

M103-378

Attachment for HUDSON shank

Ø4 mm Cannulated
175 rpm / 20 Nm
30 x 85 mm / 230 g

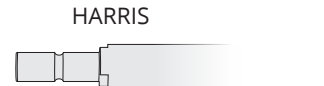
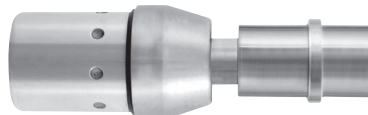


HUDSON

M103-379

Attachment for HARRIS shank

Ø4 mm Cannulated
175 rpm / 20 Nm
30 x 90 mm / 227 g

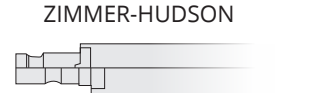
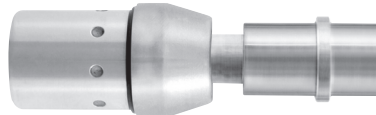


HARRIS

M103-380

Attachment for ZIMMER-HUDSON shank

Ø4 mm Cannulated
175 rpm / 20 Nm
30 x 90 mm / 235 g

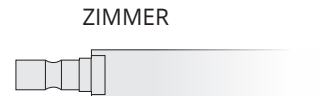
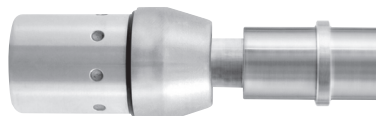


ZIMMER-HUDSON

M103-381

Attachment for ZIMMER shank

Ø4 mm Cannulated
175 rpm / 20 Nm
30 x 90 mm / 235 g



ZIMMER



REAMER ATTACHMENT

M103-330

Reamer attachment for wire and pin
Cannulated Ø 4 mm
175 rpm / 20 Nm
30 x 104 mm / 310 g



DIN 58809



M7-905

Adaptor for AO-Protek shank
Cannulated Ø 4 mm



DIN 58809

AO-PROTEK



M7-908

Adaptor for Hudson
Cannulated Ø 4 mm



DIN 58809

HUDSON



M7-907

Adaptor for Harris
Cannulated Ø 4 mm



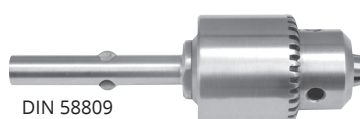
DIN 58809

HARRIS



M7-906

Universal three-jaw chuck
with key M7-250
Max Ø 6.35 mm
Cannulated Ø 4 mm



DIN 58809

DRILL

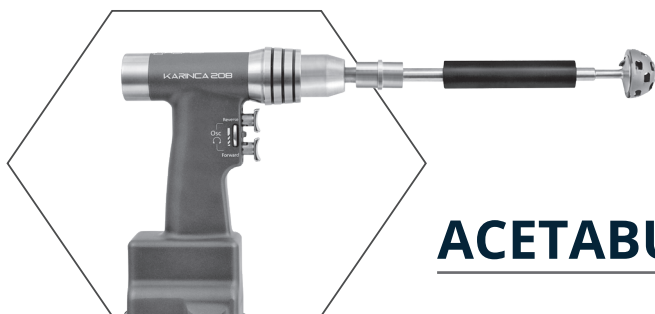


M7-250
Chuck key
for M7-906

REAMERS

Intramedullary reamers, flexible, with drilling heads		Guides, blunt			Guides, with drill tip		
Ø mm	Length 430 mm	Ø mm	Length 600 mm	Length 990 mm	Ø mm	Length 600 mm	Length 990 mm
5.5	M7-920						
6.0	M7-921						
6.5	M7-922	1.9	M7-960	M7-961	1.9	M7-962	
7.0	M7-923						
7.5	M7-924						
8.0	M7-925						
8.5	M7-926						
9.0	M7-927						
9.5	M7-928						
10.0	M7-929						
10.5	M7-930						
11.0	M7-931						
11.5	M7-932						
12.0	M7-933	3.4	M7-963	M7-964	3.4		M7-965
12.5	M7-934						
13.0	M7-935						
13.5	M7-936						
14.0	M7-937						
14.5	M7-938						
15.0	M7-939						
15.5	M7-940						
16.0	M7-941						
16.5	M7-942						
17.0	M7-943						
17.5	M7-944						
18.0	M7-945						
18.5	M7-946						
19.0	M7-947						

DIN 58809

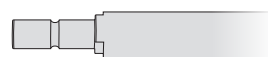


ACETABULAR REAMER ATTACHMENT

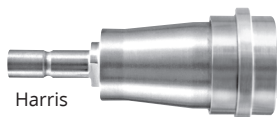
M103-320
Acetabular reamer attachment
100 rpm / 35 Nm
30 x 120 mm / 380 g



HARRIS



M7-705
Adaptor for AO-Protek shaft

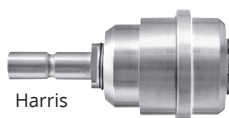


Harris

AO-PROTEK

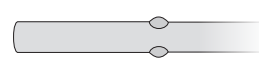


M7-706
Adaptor for DIN 58809 shaft

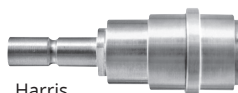


Harris

DIN 58809

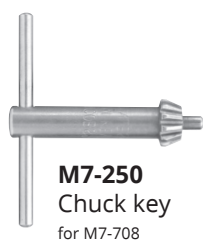


M7-707
Adaptor for Hudson shaft



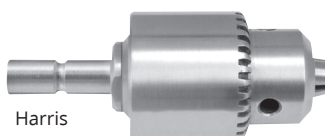
Harris

HUDSON



M7-250
Chuck key
for M7-708

M7-708
Universal three-jaw chuck
with key M7-250



Harris

DRILL



ACETABULAR REAMER TOOLS



M7-709
Shaft only,
With Harris Connection
for M7-750, M7-757



M7-789
Movable protector case,
Fits with all reamer shafts

Only Acetabular Reamer		M7-750	Ø 46 mm
		M7-751	Ø 48 mm
		M7-752	Ø 50 mm
		M7-753	Ø 52 mm
		M7-754	Ø 56 mm
		M7-755	Ø 60 mm
		M7-756	Ø 64 mm
		M7-757	Ø 68 mm



QUICK - ACTION CHUCK

(for K-wire operations)

M103-352

Quick - action chuck

Cannulated Ø 0.7 mm - 2.5 mm

700 rpm / 4 Nm

30 X 87 mm / 350 g

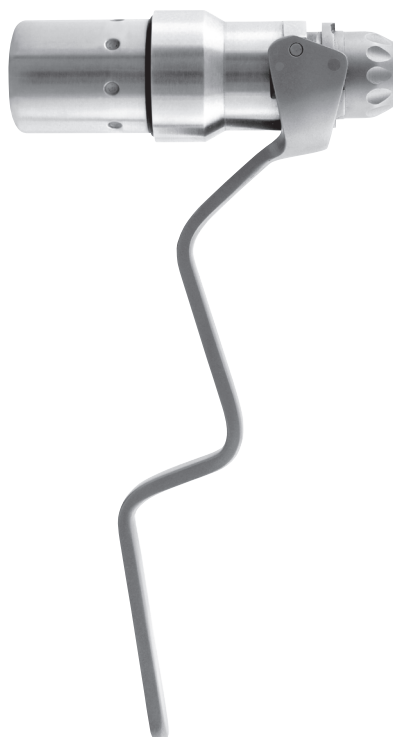
M103-353

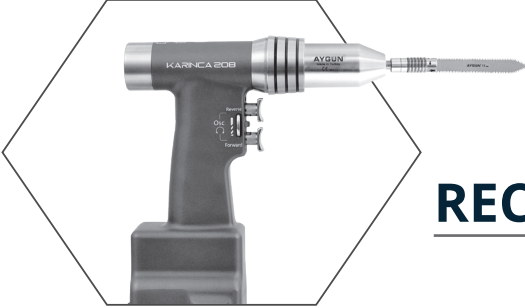
Quick - action chuck

Cannulated Ø 1.5 mm - 4.0 mm

700 rpm / 4 Nm

30 X 87 mm / 350 g





RECIPROCATING SAW ATTACHMENT

M103-235

Reciprocating saw attachment
(Without saw blades)

High : 11.500 cpm / \longleftrightarrow 4 mm
Low : 10.000 cpm / \longleftrightarrow 4 mm
33 x 134 mm / 400 g



RECIPROCATING SAW BLADES

M103-236

Usable length: 62 mm
Width: 8 mm



M103-237

Usable length: 75 mm
Width: 13 mm



M103-238

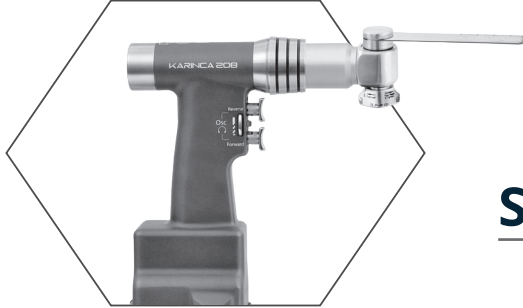
Usable length: 60 mm
Width: 13 mm



M103-239

Usable length: 75 mm
Width: 13 mm





SAGITTAL SAW ATTACHMENT

M103-300

Sagittal saw attachment
(Without saw blades)

High : 11.500 cpm / $\angle 4^{\circ} 50'$
Low : 10.000 cpm / $\angle 4^{\circ} 50'$
62 x 111 mm / 460 g



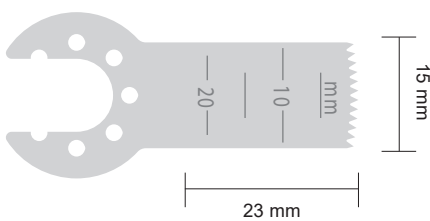
M103-301

Sagittal saw long attachment
(Without saw blades)

High : 11.500 cpm / $\angle 4^{\circ} 50'$
Low : 10.000 cpm / $\angle 4^{\circ} 50'$
62 x 175 mm / 700 g

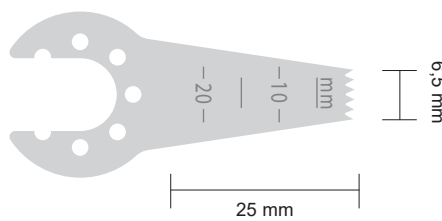


SAGITTAL SAW BLADES



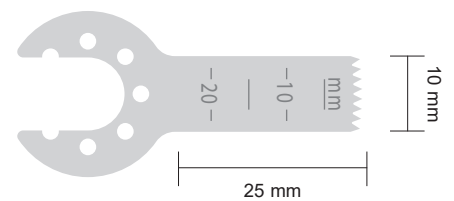
M103-1110

Material Thickness : 0.4 mm
Cutting Thickness : 0.6 mm



M103-1111

Material Thickness : 0.4 mm
Cutting Thickness : 0.6 mm

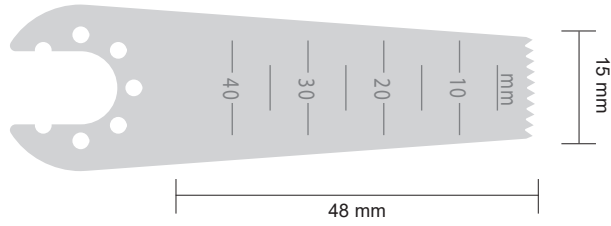


M103-1112

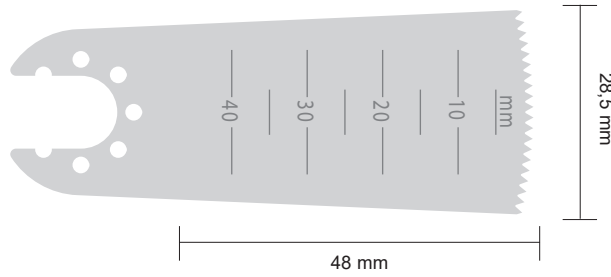
Material Thickness : 0.4 mm
Cutting Thickness : 0.6 mm

M103-1113

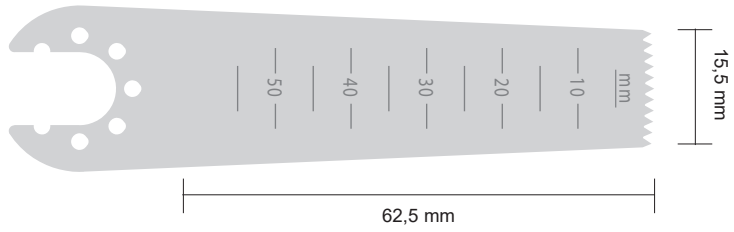
Material Thickness : 0.4 mm
Cutting Thickness : 0.6 mm


M103-1114

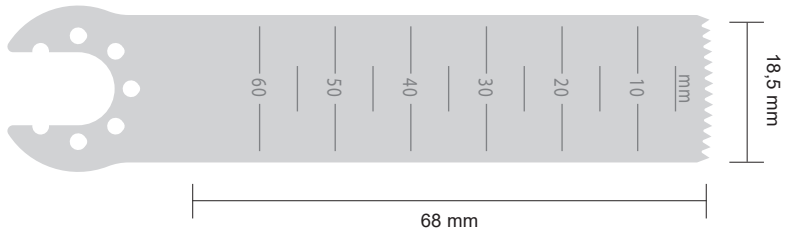
Material Thickness : 0.4 mm
Cutting Thickness : 0.6 mm


M103-1115

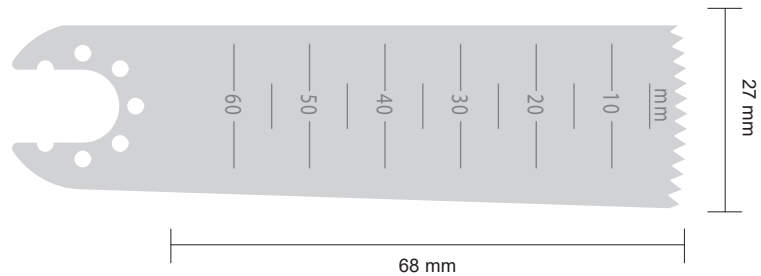
Material Thickness : 0.6 mm
Cutting Thickness : 0.8 mm


M103-1116

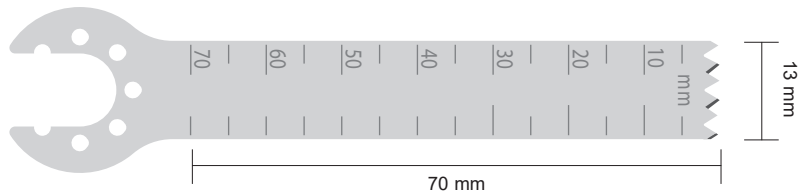
Material Thickness : 0.6 mm
Cutting Thickness : 0.8 mm


M103-1117

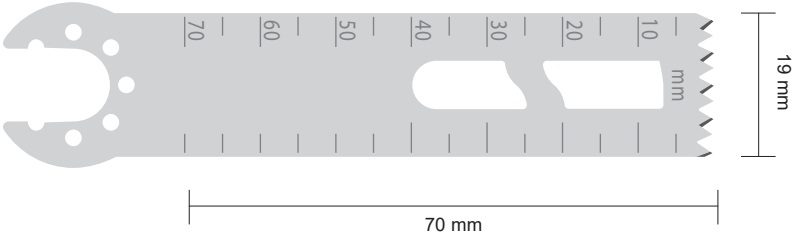
Material Thickness : 0.6 mm
Cutting Thickness : 0.8 mm


M103-1118

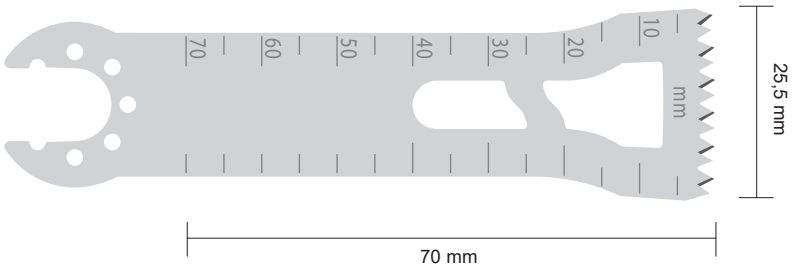
Material Thickness : 1.19 mm



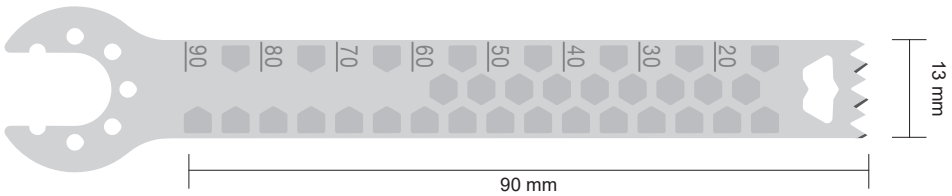
M103-1119
Material Thickness: 1 mm



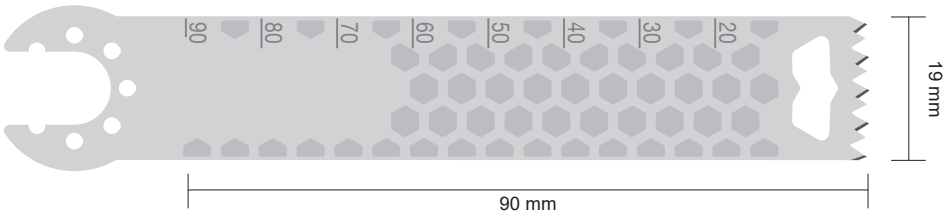
M103-1120
Material Thickness: 1 mm



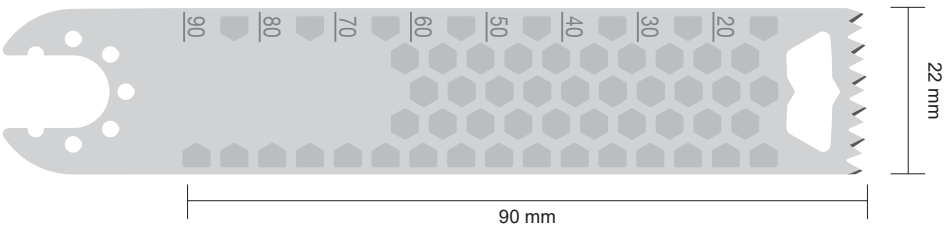
	Material Thickness
M103-1121	1 mm
M103-1122	1.19 mm
M103-1123	1.27 mm
M103-1124	1.37 mm



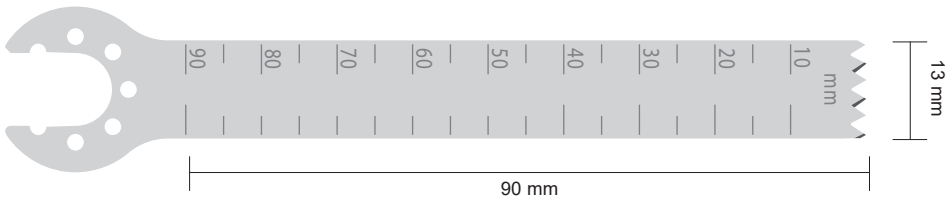
	Material Thickness
M103-1125	1.19 mm
M103-1126	1.27 mm
M103-1127	1.37 mm

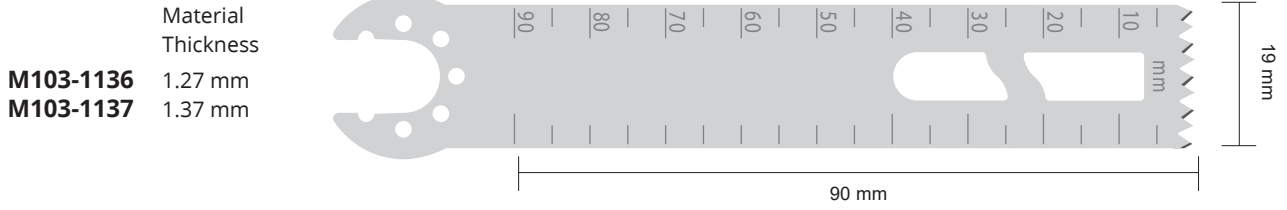


	Material Thickness
M103-1128	1 mm
M103-1129	1.19 mm
M103-1130	1.27 mm
M103-1131	1.37 mm
M103-1132	1.47 mm

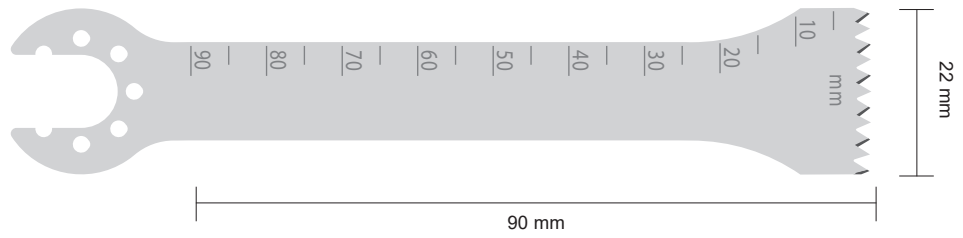


	Material Thickness
M103-1133	1 mm
M103-1134	1.19 mm
M103-1135	1.27 mm

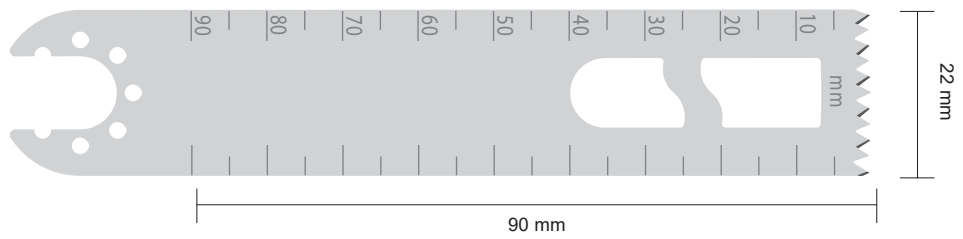




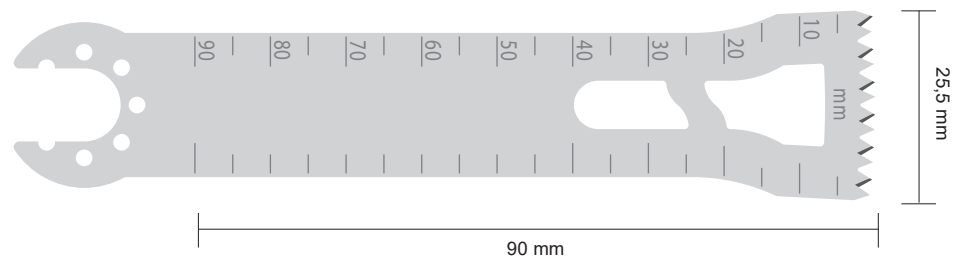
M103-1138
Material Thickness: 1.27 mm



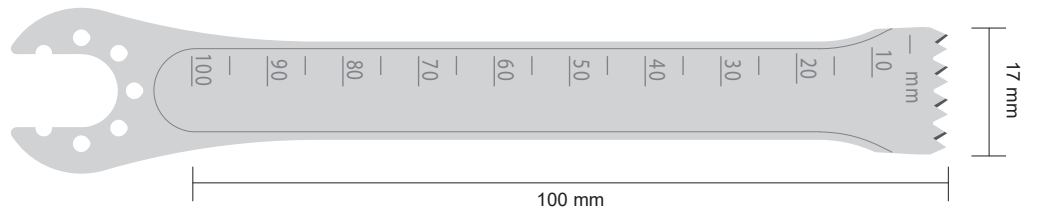
	Material Thickness
M103-1139	1 mm
M103-1140	1.27 mm



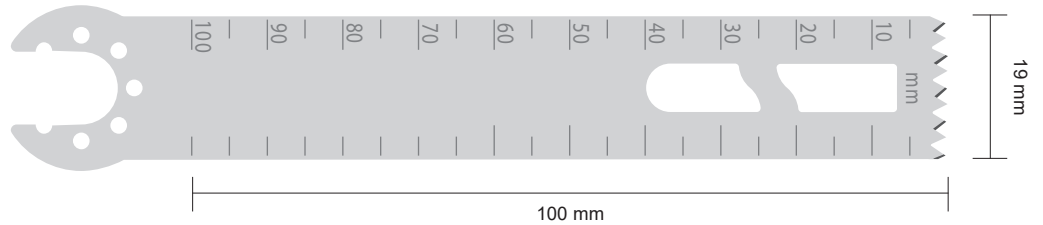
	Material Thickness
M103-1141	1 mm
M103-1142	1.19 mm
M103-1143	1.27 mm
M103-1144	1.37 mm
M103-1145	1.47 mm



M103-1146
Material Thickness: 1.27 mm



M103-1147
Material Thickness: 1.19 mm





STERNUM SAW ATTACHMENT

M103-240

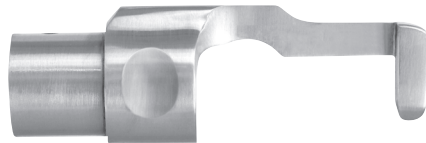
Sternum saw attachment
(Without saw blade and guide)


High : 11.500 cpm / \leftrightarrow 4 mm
Low : 10.000 cpm / \leftrightarrow 4 mm
33 x 147 mm / 550 g



M103-715

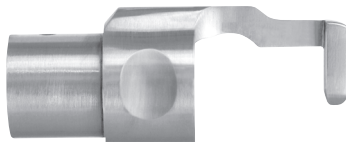
Adult saw guide




Adult saw blade	Code	Length	Usable Length	Blade Thickness	Cutting Thickness
	M103-709	58 mm	35 mm	0.6 mm	1 mm
	M103-710	58 mm	35 mm	0.8 mm	1.2 mm

M103-716

Pediatric saw guide



Pediatric saw blade	Code	Length	Usable Length	Blade Thickness	Cutting Thickness
	M103-711	40 mm	18 mm	0.6 mm	0.6 mm
	M103-712	40 mm	18 mm	0.6 mm	0.8 mm



OSCILLATING SAW ATTACHMENT

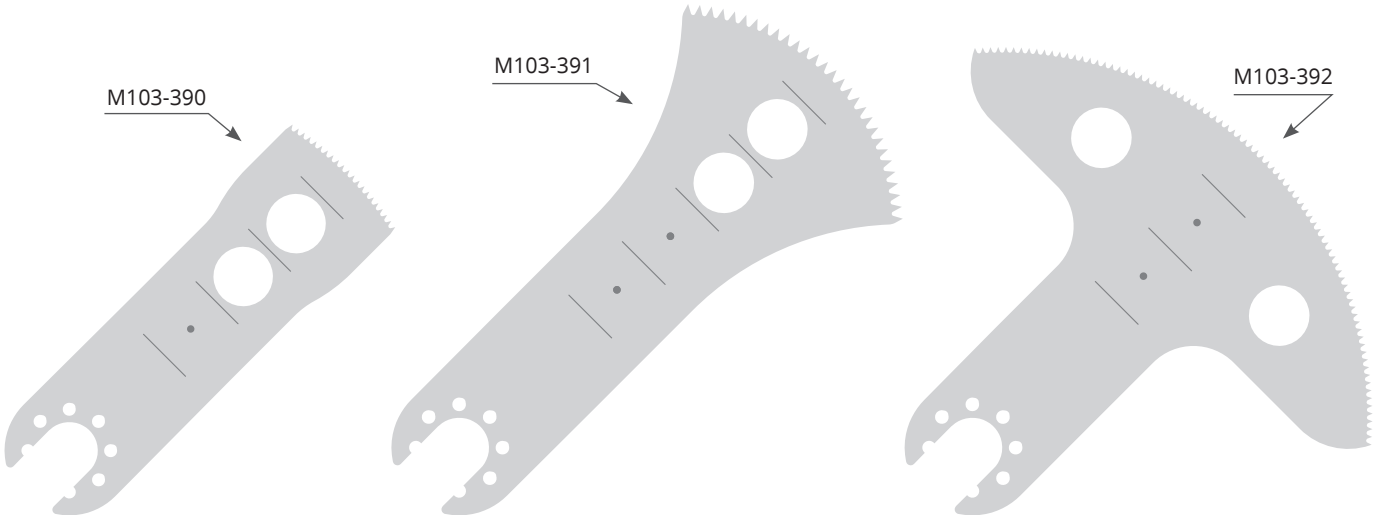
(Re-operation)

M103-300
Sagittal saw attachment
(Without saw blades)

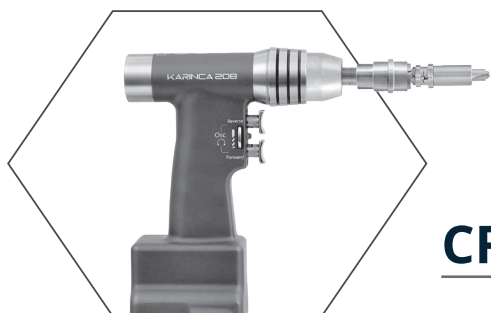
High : 11.500 cpm / $\angle 4^\circ 50'$
Low : 10.000 cpm / $\angle 4^\circ 50'$
62 x 111 mm / 460 g



BLADES (for M103-300)



Code	Length	Width	Thickness
M103-390	35 mm	25 mm	0.8 mm
M103-391	50 mm	40 mm	0.8 mm
M103-392	35 mm	75 mm	0.8 mm



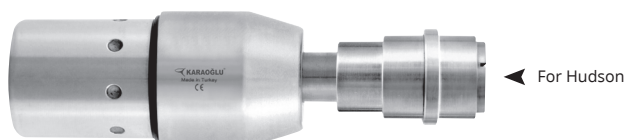
CRANIAL PERFORATOR ATTACHMENT

(Dura Stop Perforator Attachment)

M208-250

Cranial perforator attachment
(without perforator)

900 rpm / 4 Nm
30 x 123 mm / 350 g



TREPANS

Hudson



M7-120 Ø 6/9 mm
23 x 92 mm / 116 g

- Skull perforator
- With step-down drilling
- Automatic dura stop
- No key needed

Hudson



M7-121 Ø 9/12 mm
23 x 92 mm / 120 g

Hudson



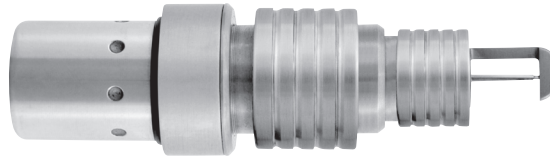
M7-122 Ø 12/15 mm
23 x 92 mm / 125 g



CRANIAL BURR ATTACHMENT

(Trauma Operations)

M103-255
Cranial burr attachment
Dura guard, rotatable
12.500 rpm
35 x 118 mm / 320 g



CRANIAL BURR TOOLS

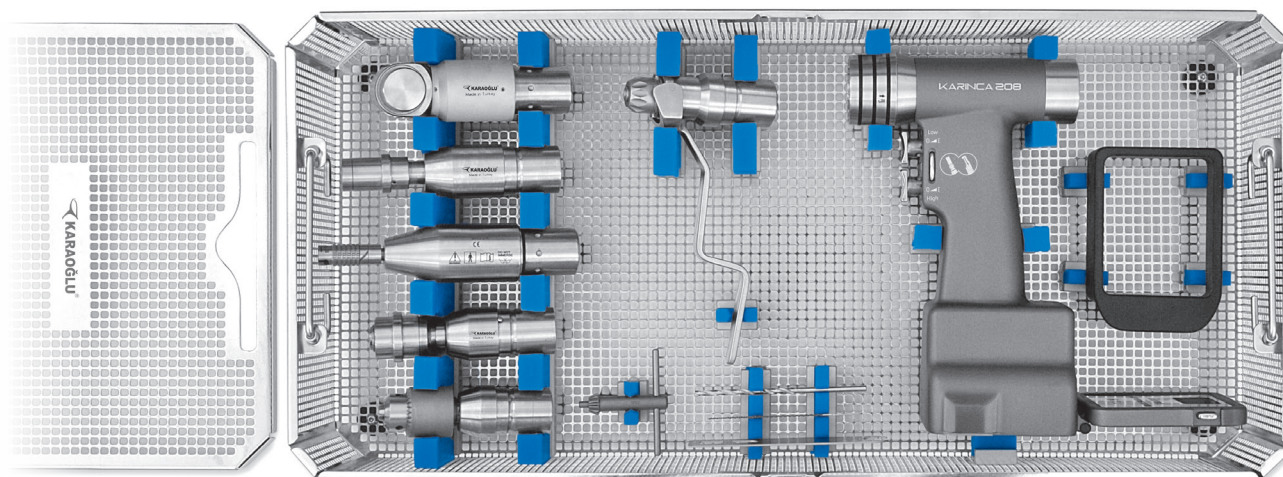


M103-203
Tapered cutter



M103-332
Dura guard, rotatable

ORTHOPEDIC SET



M208-1001

Orthopedic Set

Set Content

M208-200	Hexa - Function Handpiece
M208-210	Power box
M206-212	Autoclavable sterile funnel for aseptic battery loading
M206-226	Charger unit for 1 battery
M208-309	Drill attachment with keyed chuck
M7-502	Drill bit
M7-250	Chuck key
M103-300	Sagittal saw attachment
M103-1146	Sagittal saw blade
M103-320	Acetabular reamer attachment
M103-330	Reamer attachment for wire and pin
M103-352	Quick - action chuck
M103-235	Reciprocating saw attachment
M103-239	Reciprocating saw blades
M14-816	Spray oil
K3-2723-S5	Basket with silicone fixations 546 x 259 x 114 mm
K6-022	Standard Model Container 600 x 285 x 155 mm



M208-210
Power box



M206-226
Charger unit for 1 battery



M14-816

Spray oil, for motor and additional pcs.
After cleaning of every use. Oil inside of all moving pcs of device by spraying method and run the device for 2-3 seconds.



K6-022

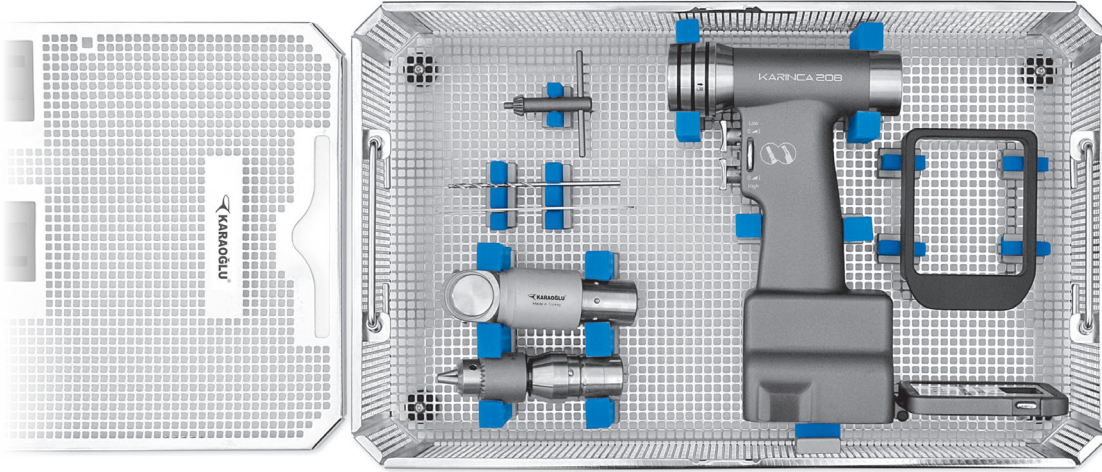
Standard Model Container
Box (non perforated) Lid perforated
600 x 285 x 155 mm



K3-2723-S5

Basket with silicone fixations
546 x 259 x 114 mm

DRILL, SAGITTAL SET



M208-1003 Drill, Sagittal Set

Set Content

M208-200	Hexa - Function Handpiece
M208-210	Power box
M206-212	Autoclavable sterile funnel for aseptic battery loading
M206-226	Charger unit for 1 battery
M208-309	Drill attachment with keyed chuck
M7-502	Drill bit
M7-250	Chuck key
M103-300	Sagittal saw attachment
M103-1146	Sagittal saw blade
M14-816	Spray oil
K3-2731-S6	Basket with silicone fixations 411 x 259 x 114 mm
K6-252	Standard Model Container 475 x 285 x 155 mm



M208-210
Power box



M206-226
Charger unit for 1 battery



M14-816

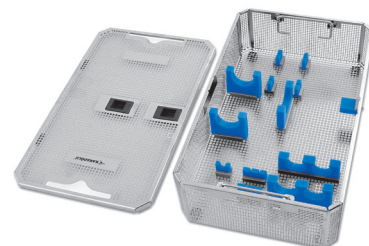
Spray oil, for motor and additional pcs.

After cleaning of every use. Oil inside of all moving pcs of device by spraying method and run the device for 2-3 seconds.



K6-252

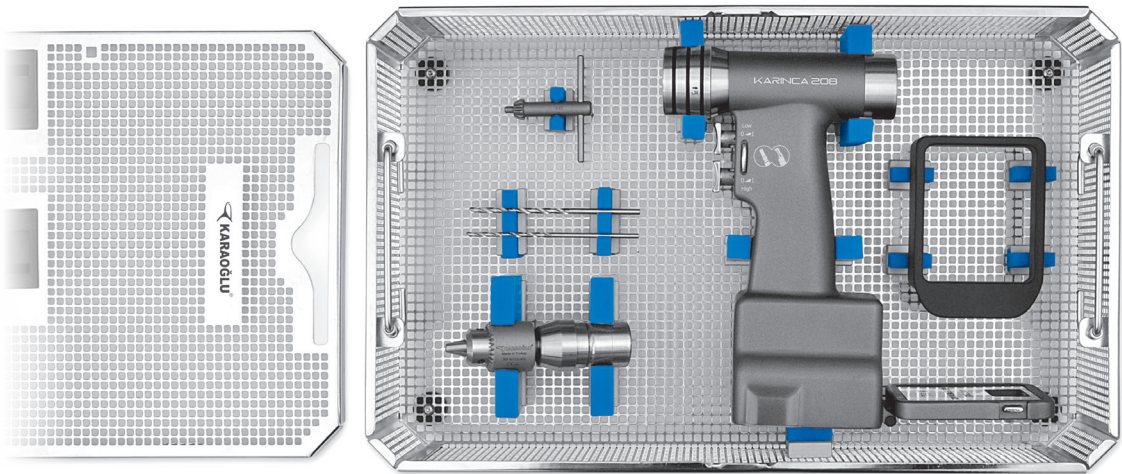
Standard Model Container
Box (non perforated) Lid perforated
475 x 285 x 155 mm



K3-2731-S6

Basket with silicone fixations
411 x 259 x 114 mm

DRILL SET



M208-1005 Drill Set	
Set Content	
M208-200	Hexa - Function Handpiece
M208-210	Power box
M206-212	Autoclavable sterile funnel for aseptic battery loading
M206-226	Charger unit for 1 battery
M208-309	Drill attachment with keyed chuck
M7-502	Drill bit
M7-504	Drill bit
M7-250	Chuck key
M14-816	Spray oil
K3-2731-S7	Basket with silicone fixations 411 x 259 x 114 mm
K6-252	Standard Model Container 475 x 285 x 155 mm



M208-210
Power box



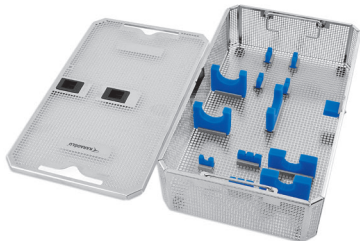
M206-226
Charger unit for 1 battery



M14-816
Spray oil, for motor and additional pcs.
After cleaning of every use. Oil inside of all moving pcs of device by spraying method and run the device for 2-3 seconds.

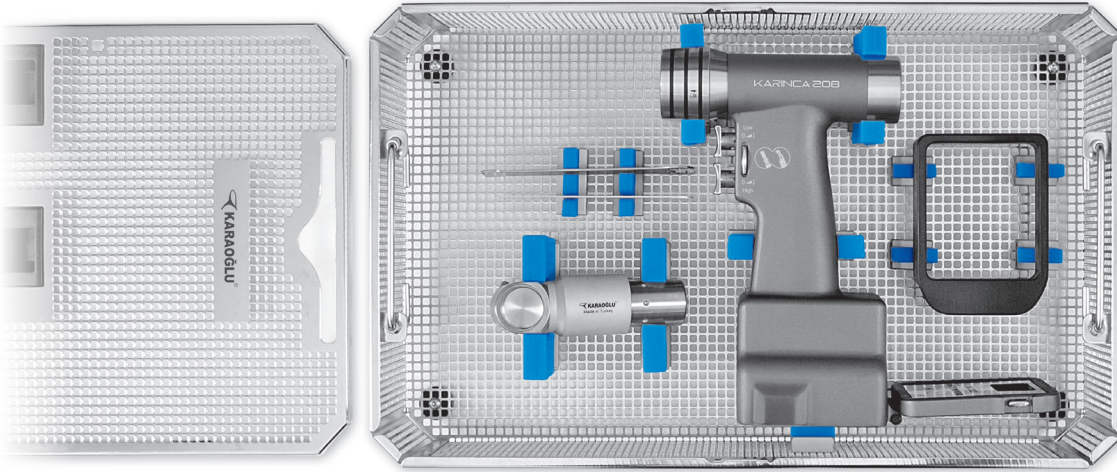


K6-252
Standard Model Container
Box (non perforated) Lid perforated
475 x 285 x 155 mm



K3-2731-S7
Basket with silicone fixations
411 x 259 x 114 mm

SAGITTAL SAW SET



M208-1007

Sagittal Saw Set

Set Content

M208-200	Hexa - Function Handpiece
M208-210	Power box
M206-212	Autoclavable sterile funnel for aseptic battery loading
M206-226	Charger unit for 1 battery
M103-300	Sagittal saw attachment
M103-1117	Sagittal saw blade
M103-1146	Sagittal saw blade
M14-816	Spray oil
K3-2731-S8	Basket with silicone fixations 411 x 259 x 114 mm
K6-252	Standard Model Container 475 x 285 x 155 mm



M208-210
Power box



M206-226
Charger unit for 1 battery



M14-816

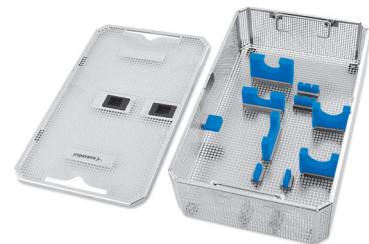
Spray oil, for motor and additional pcs.

After cleaning of every use. Oil inside of all moving pcs of device by spraying method and run the device for 2-3 seconds.



K6-252

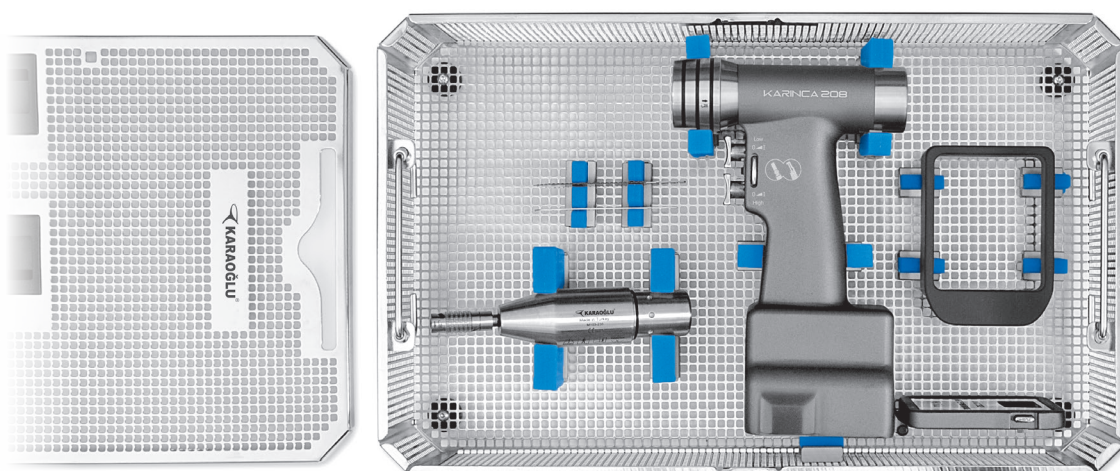
Standard Model Container
Box (non perforated) Lid perforated
475 x 285 x 155 mm



K3-2731-S8

Basket with silicone fixations
411 x 259 x 114 mm

RECIPROCATING SAW SET



M208-1013 Reciprocating Saw Set

Set Content

M208-200	Hexa - Function Handpiece
M208-210	Power box
M206-212	Autoclavable sterile funnel for aseptic battery loading
M206-226	Charger unit for 1 battery
M103-235	Reciprocating saw attachment
M103-237	Reciprocating saw blades
M103-239	Reciprocating saw blades
M14-816	Spray oil
K3-2731-S9	Basket with silicone fixations 411 x 259 x 114 mm
K6-252	Standard Model Container 475 x 285 x 155 mm



M208-210
Power box



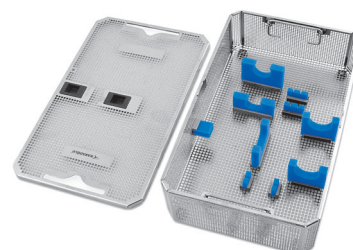
M206-226
Charger unit for 1 battery



M14-816
Spray oil, for motor and additional pcs.
After cleaning of every use. Oil inside of all moving pcs of device by spraying method and run the device for 2-3 seconds.

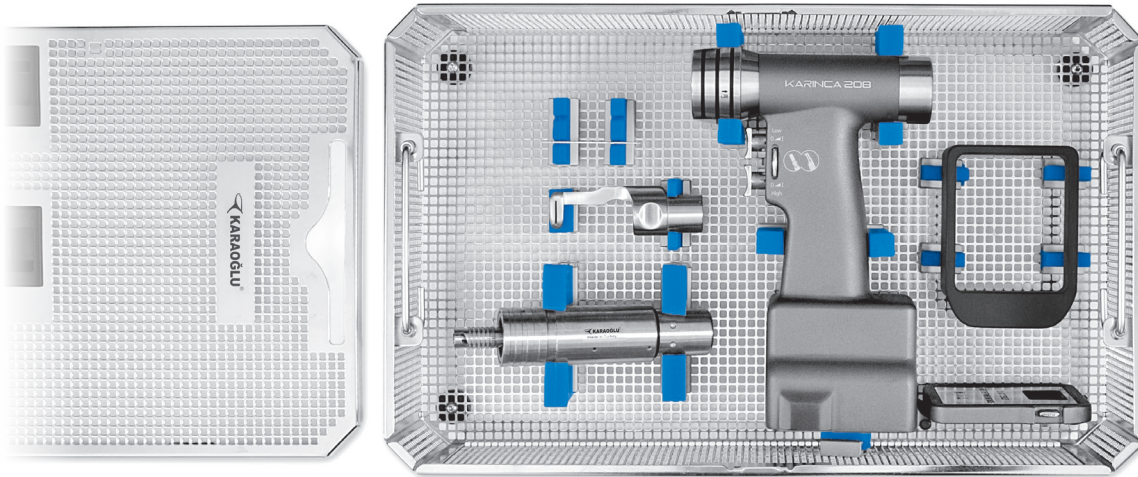


K6-252
Standard Model Container
Box (non perforated) Lid perforated
475 x 285 x 155 mm



K3-2731-S9
Basket with silicone fixations
411 x 259 x 114 mm

STERNAL SAW SET



M208-1009

Sternal Saw Set

Set Content

M208-200	Hexa - Function Handpiece
M208-210	Power box
M206-212	Autoclavable sterile funnel for aseptic battery loading
M206-226	Charger unit for 1 battery
M103-240	Sternum saw attachment
M103-715	Sternum saw guide
M103-710	Sternum saw blade
M14-816	Spray oil
K3-2731-S10	Basket with silicone fixations 411 x 259 x 114 mm
K6-252	Standard Model Container 475 x 285 x 155 mm



M208-210
Power box



M206-226
Charger unit for 1 battery



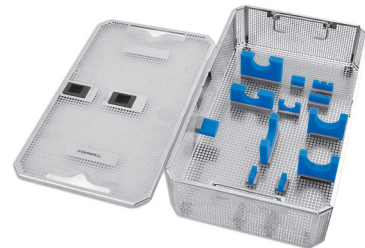
M14-816

Spray oil, for motor and additional pcs.
After cleaning of every use. Oil inside of all moving pcs of device by spraying method and run the device for 2-3 seconds.



K6-252

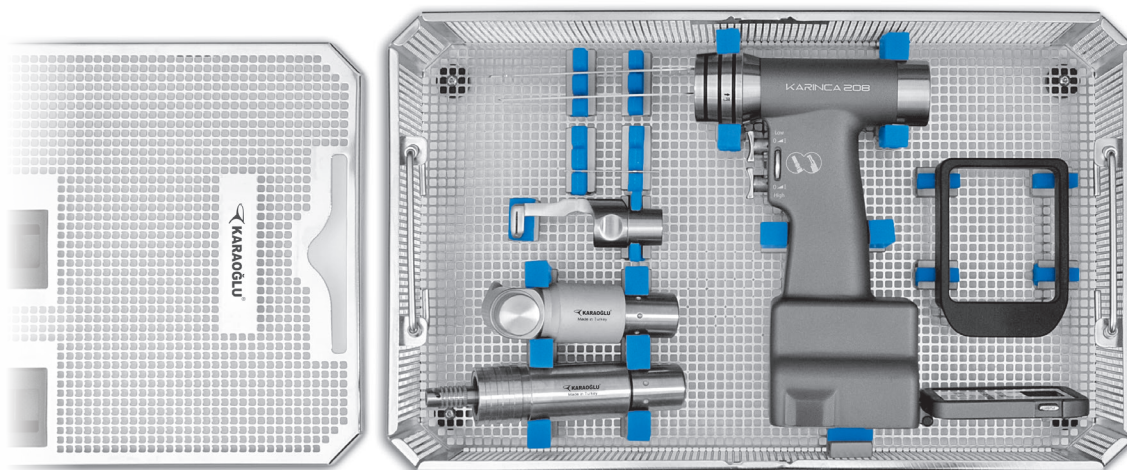
Standard Model Container
Box (non perforated) Lid perforated
475 x 285 x 155 mm



K3-2731-S10

Basket with silicone fixations
411 x 259 x 114 mm

CARDIO VASCULAR SET



M208-1011 Cardio Vascular Set

Set Content

M208-200	Hexa - Function Handpiece
M208-210	Power box
M206-212	Autoclavable sterile funnel for aseptic battery loading
M206-226	Charger unit for 1 battery
M103-240	Sternum saw attachment
M103-715	Sternum saw guide
M103-710	Sternum saw blade
M103-300	Sagittal saw attachment
M103-392	Re-Operation saw blade
M14-816	Spray oil
K3-2731-S11	Basket with silicone fixations 411 x 259 x 114 mm
K6-252	Standard Model Container 475 x 285 x 155 mm



M208-210
Power box



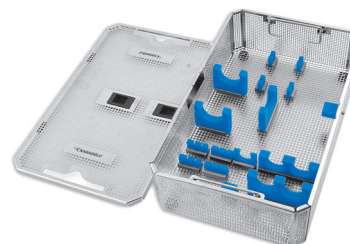
M206-226
Charger unit for 1 battery



M14-816
Spray oil, for motor and additional pcs.
After cleaning of every use. Oil inside of all moving pcs of device by spraying method and run the device for 2-3 seconds.



K6-252
Standard Model Container
Box (non perforated) Lid perforated
475 x 285 x 155 mm



K3-2731-S11
Basket with silicone fixations
411 x 259 x 114 mm

CONTAINER SET FOR STERILIZATION



K8-123V

Lid, B3 Barrier Model
585 x 285 mm

K6-107

Container, non perforated
600 x 272 x 138 mm



K8-343V

Lid, B3 Barrier Model
460 x 285 mm

K6-307

Container, non perforated
475 x 272 x 138 mm



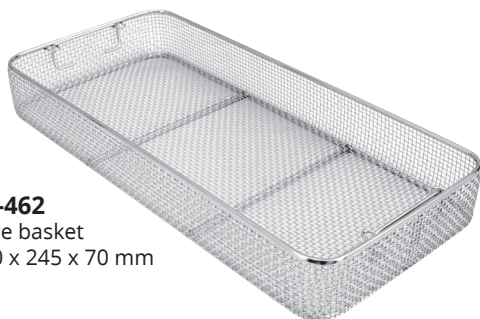
K3-742

Basket made from
stainless steel sheet (with stand)
540 x 253 x 80 mm



K3-750

Basket made from
stainless steel sheet (with stand)
405 x 253 x 80 mm



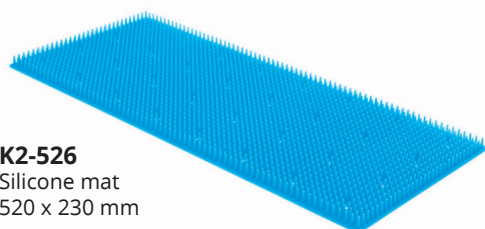
K2-462

Wire basket
540 x 245 x 70 mm



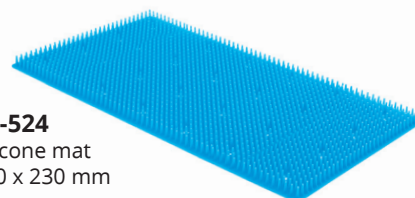
K2-1502

Wire basket
405 x 245 x 70 mm



K2-526

Silicone mat
520 x 230 mm



K2-524

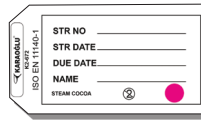
Silicone mat
380 x 230 mm

	code	color
Thoracotomy	K2-700	Red
Basic Set	K2-701	Blue
Basic Set	K2-702	Green
Thoracotomy	K2-703	Yellow
Thoracotomy	K2-704	Grey
Basic Set	K2-705	Black
Basic Set	K2-706	Pink
Thoracotomy	K2-707	Brown

Identification labels (aluminium)
Coloured identification labels
Engraved to your specifications
Maximum 16 letters



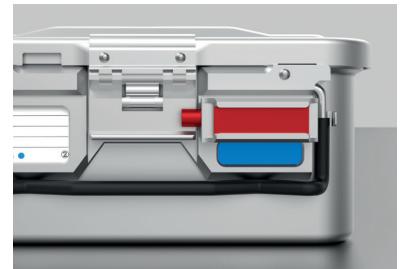
K2-673
Labels (paper)
100 pcs. With indicator.
For small size and special
containers



K2-672
Labels (paper)
100 pcs. With indicator.
For full and half size containers



K1-900
Modular Auto Lock Mechanism (2 Pcs)



K2-660 red
Security seal
100 pcs made of plastic



K2-740
Single use paper
filter 100 pcs
with indicator.
KARAOĞLU mark.



KARAOĞLU CERRAHİ ALETLER

İstiklal Mah. İlkadim Sanayi Sitesi 58. Sok.
No:77 TEKKEKÖY/SAMSUN

T : +90 (362) 238 6104 - +90 555 013 6105
F : +90 (362) 238 5591

info@karaoglucerrahi.com.tr
karaoglucerrahi.com.tr