



KARINCA 206

BATTERY OPERATED SURGICAL POWER TOOLS



Elevate Your Surgical Performance

Ergonomic Design • High Power and Reliability • Advanced Machining Technology • Li-ion Battery Technology



Sagittal Saw System



Hexa - Function Drill System

- Drill Mode (F&R)
- Drill Oscillation Mode
- Screwing Mode (F&R)
- Tapping Mode
- Reamer Mode (F&R)
- Reamer Oscillation Mode



Reciprocating Saw System



Sternum Saw System

KARINCA 206

- Light weight Karinca 206 provides efficient and reliable cutting performance with new generation powerful motor;
- One hand piece solution for reaming, high speed drilling, screw driving and tapping functions with high torque performance;
- Lithium-ion battery technology provides consistent power during the operation;
- Easy handling and ergonomic design of Karinca 206 ensures reliable and better controlled operation results;
- Efficient torque for acetabular reaming;
- Karinca 206 is an innovative new generation power tool with high quality engineering materials;
- Providing efficiency with Engineering Solutions;
- Extended battery life;
- Comfortable ergonomic design;
- Easy attachment assembly;
- High speed drilling and oscillating.

- Less Weight, High Power
- Next Generation Cutting Technology
- New Generation Surgical Motor Technology
- Li-ion Battery Technology



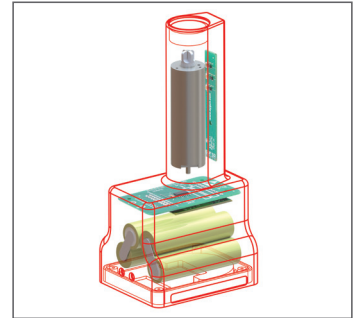
Karınca 206 power box records all data about usage for technical service information.

Karınca 206 provides users to observe battery level without removing the power box.

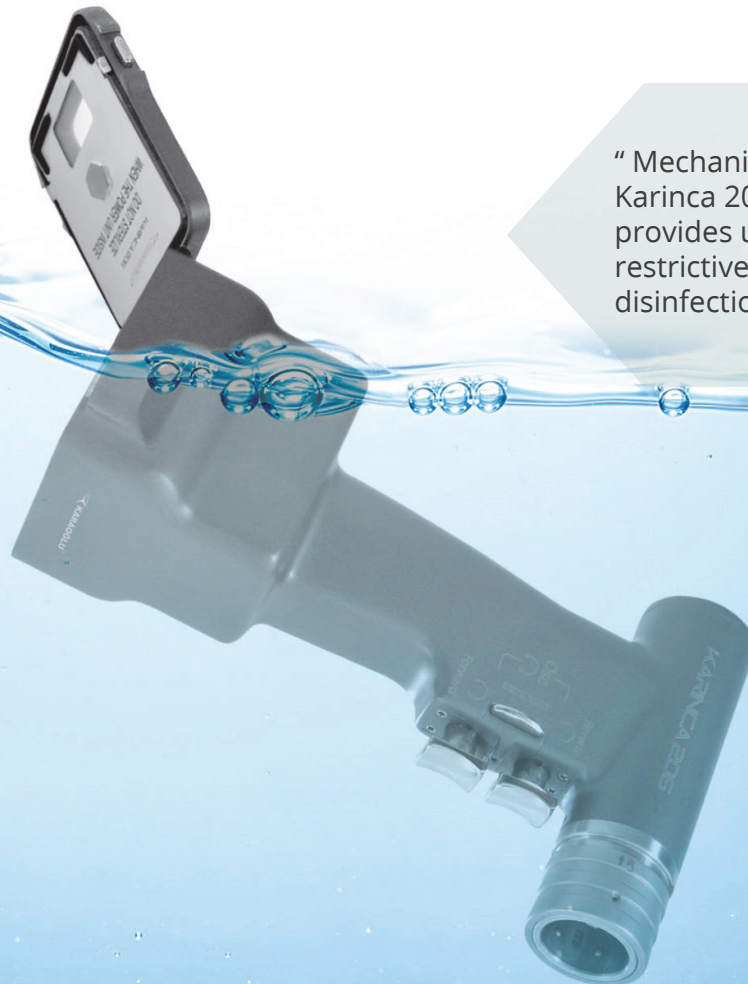
Karınca 206 can also provide information about battery process cycles like how many times, minutes, seconds the battery is charged, half charged or fully charged.



Power box oled screen enables users to indicate battery capacity by pressing the test box.



Battery, motor and all electronical components are combined together and exempt from sterilization by aim of increasing life time of the device



" Mechanical structure of Karınca 206 Handpiece provides users non-restrictive washing and disinfection."

BATTERY CHARGING UNITS



M206-410

Power box with battery pack

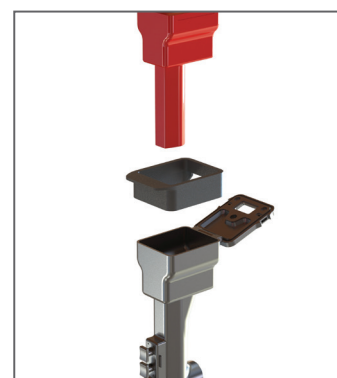
- Powerful brushless DC motor technology
- Battery capacity: 2.5 Ah / 37 Wh
- Voltage: 14.8 Volts
- Integrated oled screen and audible alert notification
- Not autoclavable
- 75 x 61 x 160 mm / 540 g



M206-212

Autoclavable sterile funnel
for aseptic battery loading

- Steam sterilisable
- 30 x 74 x 104 mm / 55 g



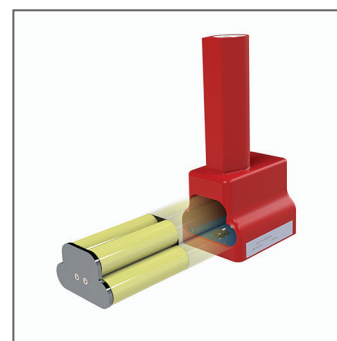
Sterile funnel



M206-411

Battery pack, spare part
(for service needs only)

- Li-ion battery
- Battery capacity: 2.5 Ah / 37 Wh
- Voltage: 14.8 Volts
- Not autoclavable
- 68 x 56 x 35 mm / 240 g



**M206-226**

Charger unit for 1 battery

- Main voltage 100-240 Volts, 50-60 Hz
- Charging current 2 A
- Charging voltage 16.8 Volts
- Protections: Short circuit / Overload / Over voltage
- Charging indicator led
- Battery not included
- 130 x 250 x 130 mm / 1300 g

**M206-227**

Charger unit for 2 batteries

- Main voltage 100-240 Volts, 50-60 Hz
- Charging current 2 A (x2)
- Charging voltage 16.8 Volts
- Protections: Short circuit / Overload / Over voltage
- Charging indicator led
- Battery not included
- 230 x 250 x 130 mm / 2150 g

**M206-229**

Charger unit for 4 batteries

- Main voltage 100-240 Volts, 50-60 Hz
- Charging current 2 A (x4)
- Charging voltage 16.8 Volts
- Protections: Short circuit / Overload / Over voltage
- Charging indicator led
- Battery not included
- 430 x 250 x 130 mm / 3850 g

DRILL-REAMER HANDPIECE



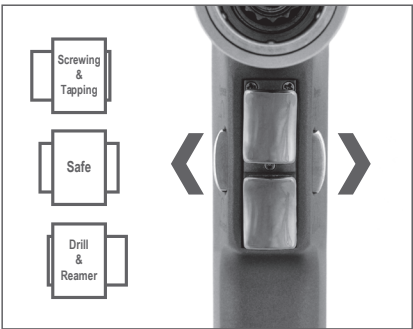
Six
Different
Trigger
Functions

M206-200
Hexa - Function Drill System
(Without drills and power box)

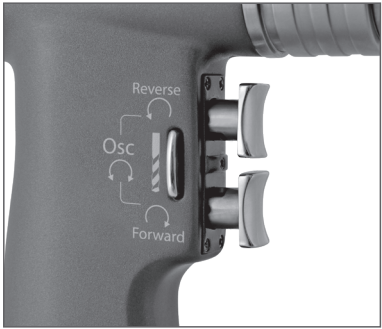
- Dual trigger system for speed control and direction control
- Steam sterilisable
- Drill Mode F&R (1200 rpm)
- Drill Oscillation Mode (1200 cpm)
- Screwing Mode F&R (150 rpm)
- Tapping Mode (150 rpm)
- Reamer Mode F&R (300 rpm)
- Reamer Oscillation Mode (300 cpm)
- Cannulated Ø 4 mm
- 77 x 137 x 212 mm / 920 g



Screwing and tapping options enable smooth control with one-handpiece solution.



Drilling, Reaming, Screwing and Tapping options in one-handpiece



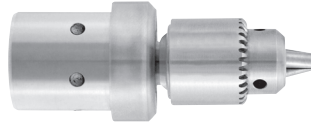
Forward, reverse and oscillation mode options provide versatile alternatives to the users.

DRILL ATTACHMENTS

M206-308

Drill attachment with keyed chuck

Ø4 mm Cannulated
Ø 1.0 mm - 4.0 mm
1200 rpm / 5 Nm
29 x 70 mm / 140 g

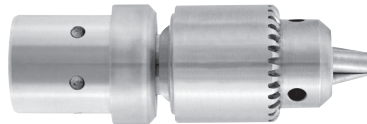


M8-473
Chuck key
for M206-308

M206-309

Drill attachment with keyed chuck

Ø4 mm Cannulated
Ø 1.0 mm - 7.4 mm
1200 rpm / 5 Nm
29 x 87 mm / 205 g

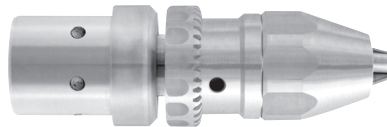


M7-250
Chuck key
for M206-309

M206-311

Drill attachment with hybrid chuck
Both keyed and keyless operation

Ø4 mm Cannulated
Ø 0.3 mm - 3 mm
1200 rpm / 5 Nm
29 x 87 mm / 225 g

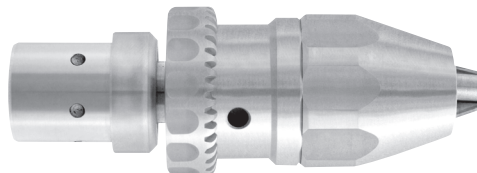


M7-253
Chuck key
for M206-311

M206-310

Drill attachment with hybrid chuck
Both keyed and keyless operation

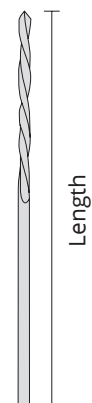
Ø4 mm Cannulated
Ø 1.0 mm - 7.4 mm
1200 rpm / 5 Nm
34 x 100 mm / 320 g



M7-252
Chuck key
for M206-310

DRILL BITS

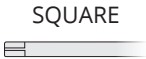
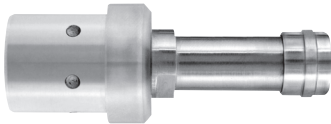
Code	(Ø) Diameter mm	Length mm
M7-500	1.5	60
M7-501	2.0	100
M7-502	2.5	100
M7-503	2.7	100
M7-504	3.0	100
M7-505	3.2	100
M7-506	3.5	100
M7-507	4.0	110
M7-508	4.5	130
M7-509	5.0	160
M7-510	6.0	160



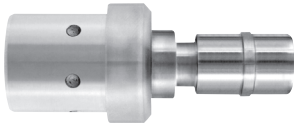


SHANK DRILL BIT ATTACHMENTS

M206-360
Attachment for SQUARE shank
1200 rpm / 5 Nm
29 x 75 mm / 115 g



M206-361
Attachment for AO shank
1200 rpm / 5 Nm
29 x 73 mm / 125 g



M206-362
Attachment for TRINKE shank
1200 rpm / 5 Nm
29 x 70 mm / 130 g



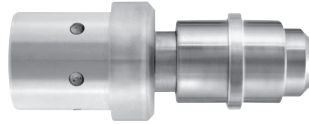
SHANK DRILL BITS

			SQUARE	AO	TRINKE
	Length mm	(Ø) Diameter mm			
	38	1.5	M7-520	M7-540	M7-560
	45	2.0	M7-521	M7-541	M7-561
	53	2.5	M7-522	M7-542	M7-562
	57	2.7	M7-523	M7-543	M7-563
	57	3.0	M7-524	M7-544	M7-564
	57	3.2	M7-525	M7-545	M7-565
	65	3.5	M7-526	M7-546	M7-566
	70	4.0	M7-527	M7-547	M7-567
	70	4.5	M7-528	M7-548	M7-568
	95	5.0	M7-529	M7-549	M7-569
	120	6.0	M7-530	M7-550	M7-570

M206-375

Attachment for OSTEO shank

Ø4 mm Cannulated
300 rpm / 22 Nm
29 x 78 mm / 160 g

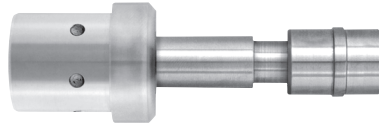


OSTEO

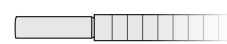

M206-376

Attachment for DHS shank

Ø4 mm Cannulated
300 rpm / 22 Nm
29 x 100 mm / 170 g

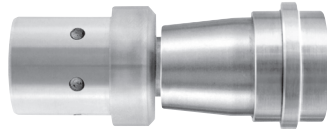


DHS


M206-377

Attachment for AO-PROTEK shank

Ø4 mm Cannulated
300 rpm / 22 Nm
29 x 82 mm / 210 g

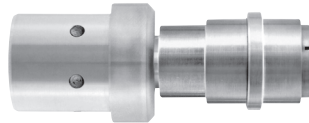


AO-PROTEK

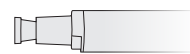

M206-378

Attachment for HUDSON shank

Ø4 mm Cannulated
300 rpm / 22 Nm
29 x 68 mm / 145 g

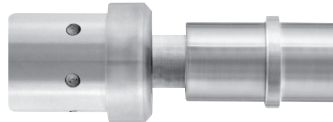


HUDSON


M206-320

Attachment for HARRIS shank

150 - 300 rpm / 35 Nm
29 x 80 mm / 175 g

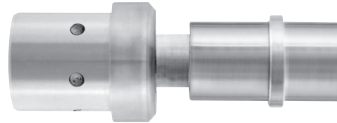


HARRIS

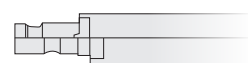

M206-380

Attachment for ZIMMER-HUDSON shank

Ø4 mm Cannulated
300 rpm / 22 Nm
29 x 115 mm / 155 g

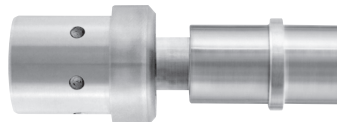


ZIMMER-HUDSON


M206-381

Attachment for ZIMMER shank

Ø4 mm Cannulated
300 rpm / 22 Nm
29 x 115 mm / 155 g

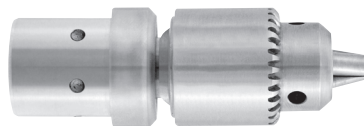


ZIMMER


M206-312

Reamer attachment with keyed chuck

Ø4 mm Cannulated
Ø 1.0 mm - 7.4 mm
300 rpm / 22 Nm
29 x 87 mm / 205 g



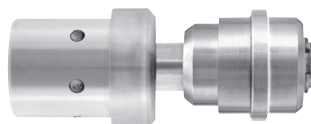
M7-250
Chuck key
for M206-312

REAMER ATTACHMENT



M206-330

Reamer attachment for wire and pin
Cannulated Ø 4 mm
300 rpm / 22 Nm
29 x 80 mm / 185 g



DIN 58809



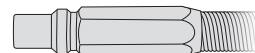
M7-905

Adaptor for AO-Protek shank
Cannulated Ø 4 mm



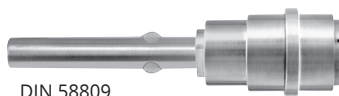
DIN 58809

AO-PROTEK



M7-908

Adaptor for Hudson
Cannulated Ø 4 mm



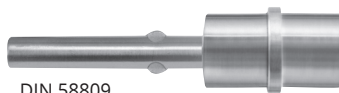
DIN 58809

HUDSON



M7-907

Adaptor for Harris
Cannulated Ø 4 mm



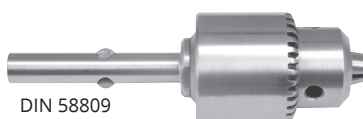
DIN 58809

HARRIS



M7-906

Universal three-jaw chuck
with key M7-250
Max Ø 6.35 mm
Cannulated Ø 4 mm



DIN 58809

DRILL

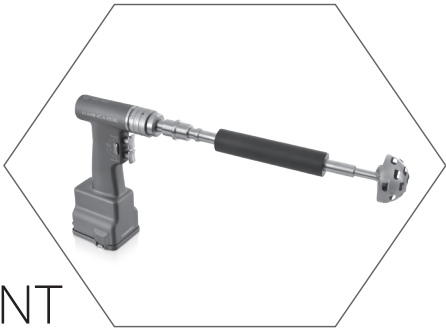


M7-250
Chuck key
for M7-906

REAMERS

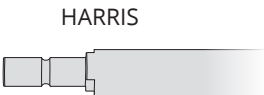
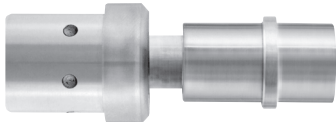
Intramedullary reamers, flexible, with drilling heads		Guides, blunt			Guides, with drill tip		
Ø mm	Length 430 mm	Ø mm	Length 600 mm	Length 990 mm	Ø mm	Length 600 mm	Length 990 mm
5.5	M7-920						
6.0	M7-921						
6.5	M7-922	1.9	M7-960	M7-961	1.9	M7-962	
7.0	M7-923						
7.5	M7-924						
8.0	M7-925						
8.5	M7-926						
9.0	M7-927						
9.5	M7-928						
10.0	M7-929						
10.5	M7-930						
11.0	M7-931						
11.5	M7-932						
12.0	M7-933	3.4	M7-963	M7-964	3.4		M7-965
12.5	M7-934						
13.0	M7-935						
13.5	M7-936						
14.0	M7-937						
14.5	M7-938						
15.0	M7-939						
15.5	M7-940						
16.0	M7-941						
16.5	M7-942						
17.0	M7-943						
17.5	M7-944						
18.0	M7-945						
18.5	M7-946						
19.0	M7-947						

DIN 58809



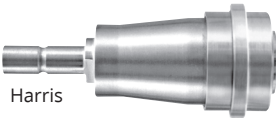
ACETABULAR REAMER ATTACHMENT

M206-320
Acetabular reamer attachment
150 - 300 rpm / 35 Nm
29 x 80 mm / 175 g



HARRIS

M7-705
Adaptor for AO-Protek shaft

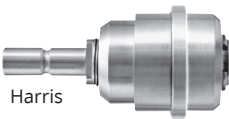


Harris

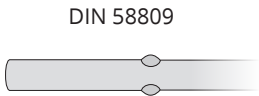


AO-PROTEK

M7-706
Adaptor for DIN 58809 shaft



Harris



DIN 58809

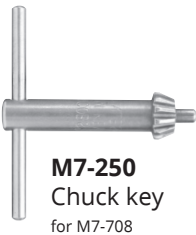
M7-707
Adaptor for Hudson shaft



Harris

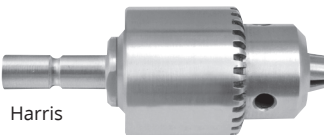


HUDSON



M7-250
Chuck key
for M7-708

M7-708
Universal three-jaw chuck
with key M7-250



Harris



DRILL

ACETABULAR REAMER TOOLS



M7-709
Shaft only,
With Harris Connection
for M7-750, M7-757



M7-789
Movable protector case,
Fits with all reamer shafts

Only Acetabular Reamer		M7-750	Ø 46 mm
		M7-751	Ø 48 mm
		M7-752	Ø 50 mm
		M7-753	Ø 52 mm
		M7-754	Ø 56 mm
		M7-755	Ø 60 mm
		M7-756	Ø 64 mm
		M7-757	Ø 68 mm

QUICK - ACTION CHUCK

(K-wire Driver)



M206-349

Quick - action chuck (K-wire Driver)

Cannulated Ø 0.6 mm - 1.0 mm

1200 rpm / 5 Nm

29 X 77 mm / 300 g

M206-352

Quick - action chuck (K-wire Driver)

Cannulated Ø 0.7 mm - 2.5 mm

1200 rpm / 5 Nm

29 X 77 mm / 300 g

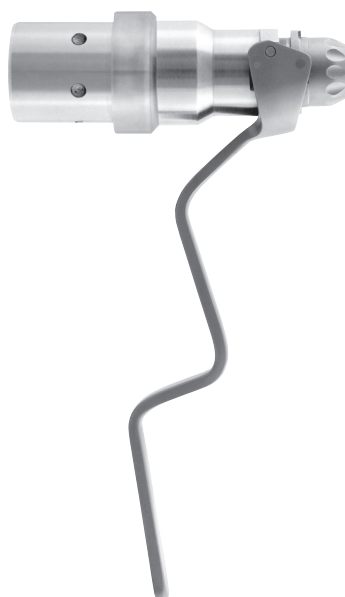
M206-353

Quick - action chuck (K-wire Driver)

Cannulated Ø 1.5 mm - 4.0 mm

1200 rpm / 5 Nm

29 X 77 mm / 300 g



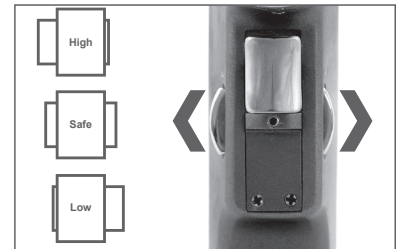
RECIPROCATING SAW SYSTEM



M206-235

Reciprocating saw system
(Without saw blades and power box)

High-Low speed options
Steam sterilisable
11.000 - 14.000 cpm / \longleftrightarrow 4 mm
77 x 182 x 212 mm / 960 g

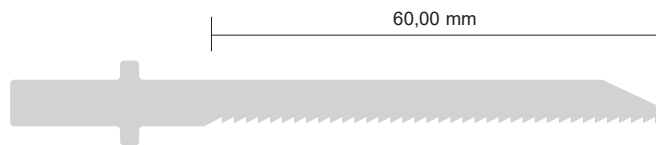


High and Low speed options in
one-handpiece

RECIPROCATING SAW BLADES

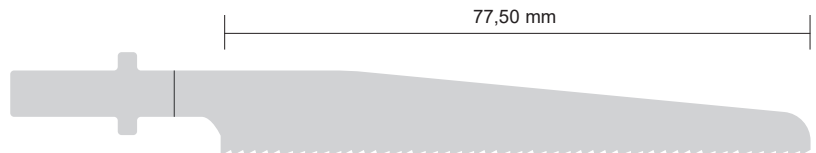
M103-236

Material Thickness : 0.60 mm
Cutting Thickness : 1.10 mm



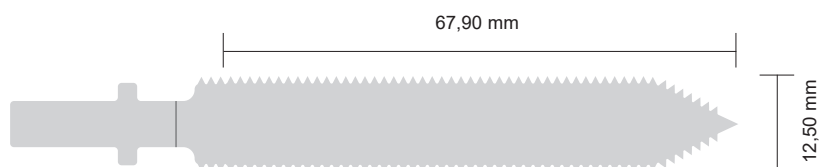
M103-238

Material Thickness : 0.80 mm
Cutting Thickness : 1.05 mm



M103-239

Material Thickness : 0.80 mm
Cutting Thickness : 1.00 mm

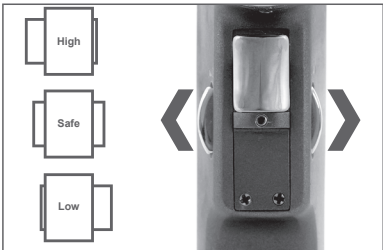


SAGITTAL SAW SYSTEM



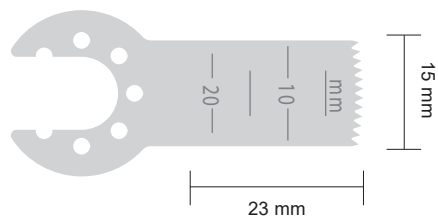
M206-300
Sagittal saw system
(Without saw blades and power box)

High-Low speed options
Steam sterilisable
11.000 - 14.000 cpm / $\angle 4^{\circ} 50'$
77 x 158 x 218 mm / 930 g

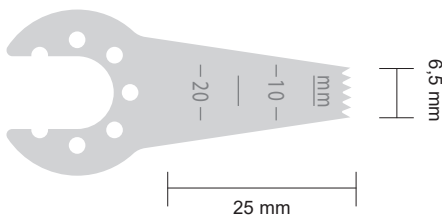


High and Low speed options in one-handpiece

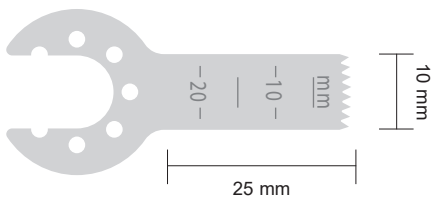
SAGITTAL SAW BLADES



M103-1110
Material Thickness : 0.4 mm
Cutting Thickness : 0.6 mm



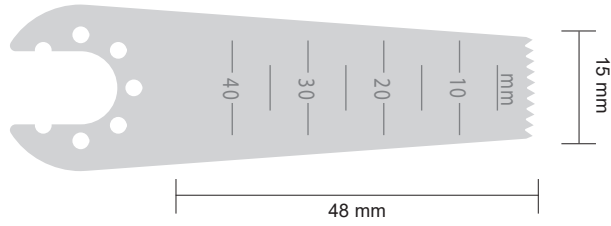
M103-1111
Material Thickness : 0.4 mm
Cutting Thickness : 0.6 mm



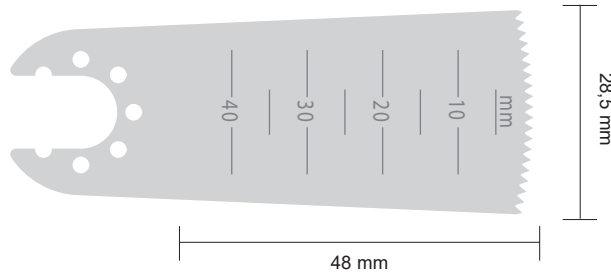
M103-1112
Material Thickness : 0.4 mm
Cutting Thickness : 0.6 mm

M103-1113

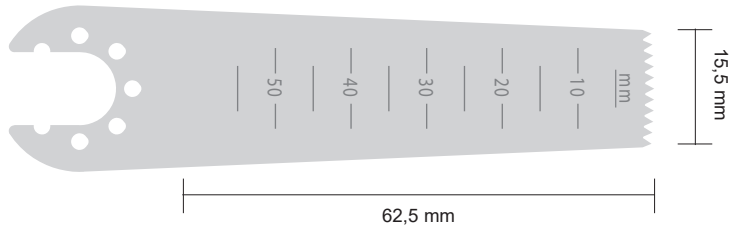
Material Thickness : 0.4 mm
Cutting Thickness : 0.6 mm


M103-1114

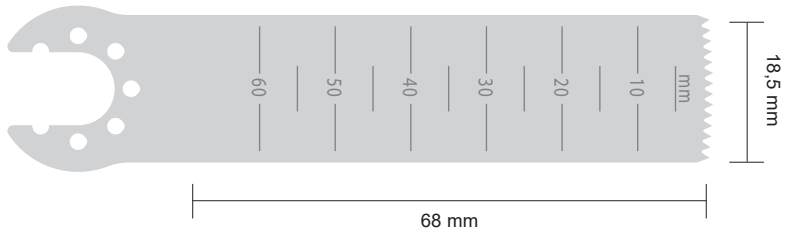
Material Thickness : 0.4 mm
Cutting Thickness : 0.6 mm


M103-1115

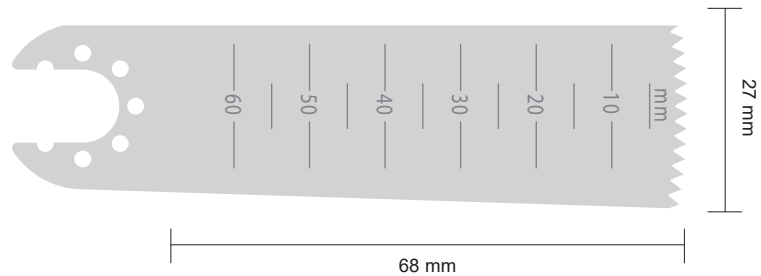
Material Thickness : 0.6 mm
Cutting Thickness : 0.8 mm


M103-1116

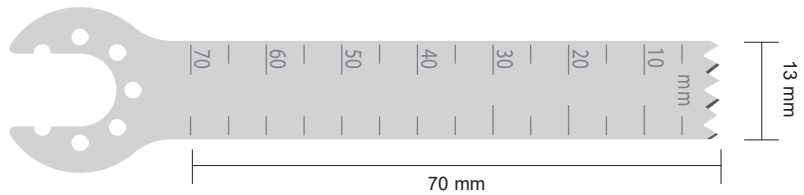
Material Thickness : 0.6 mm
Cutting Thickness : 0.8 mm


M103-1117

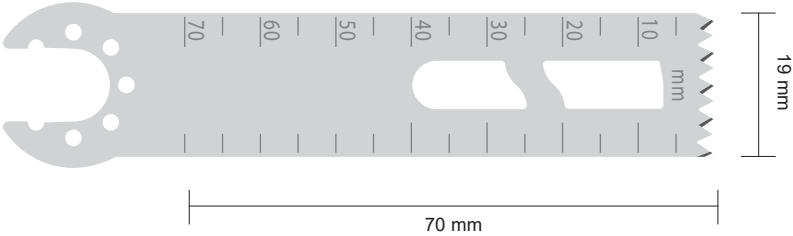
Material Thickness : 0.6 mm
Cutting Thickness : 0.8 mm


M103-1118

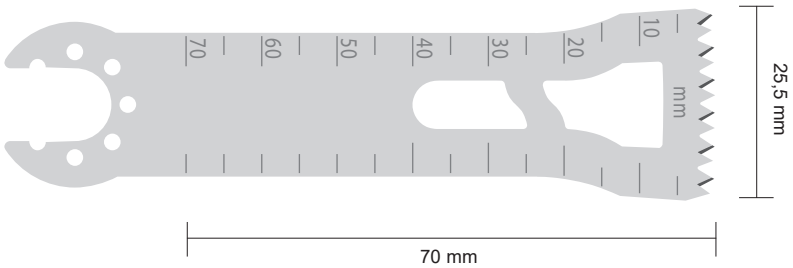
Material Thickness : 1.19 mm



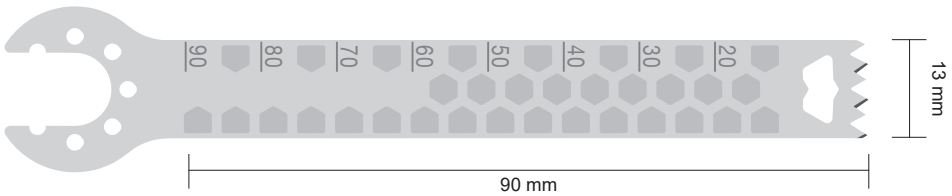
M103-1119
Material Thickness: 1 mm



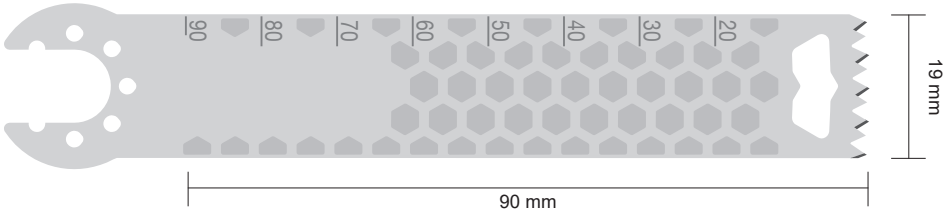
M103-1120
Material Thickness: 1 mm



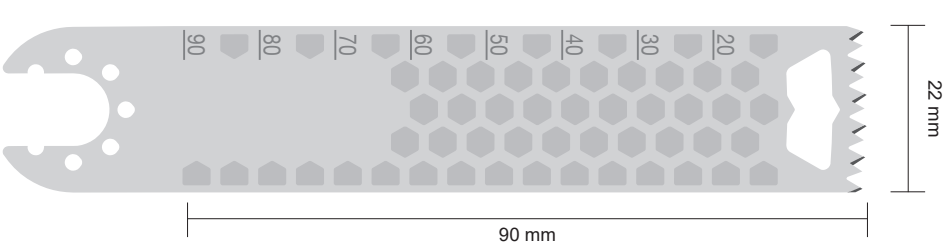
M103-1121 1 mm
M103-1122 1.19 mm
M103-1123 1.27 mm
M103-1124 1.37 mm



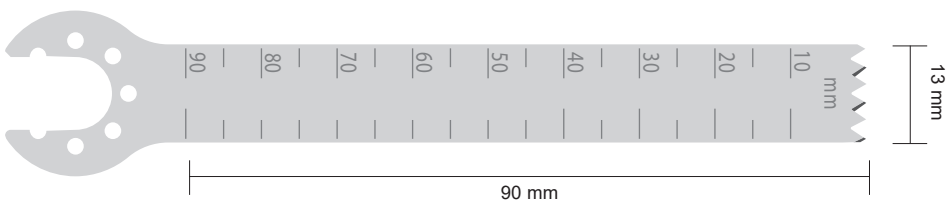
M103-1125 1.19 mm
M103-1126 1.27 mm
M103-1127 1.37 mm

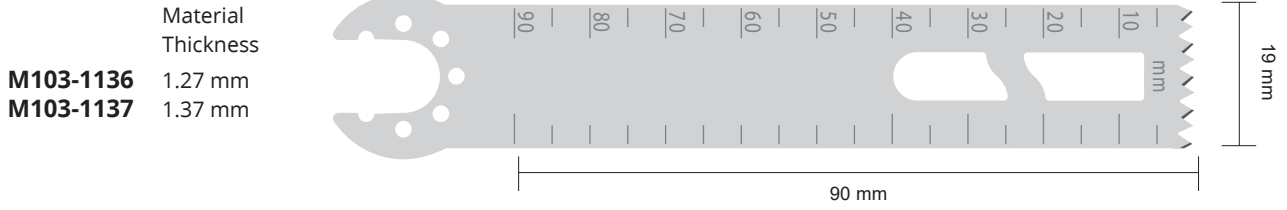


M103-1128 1 mm
M103-1129 1.19 mm
M103-1130 1.27 mm
M103-1131 1.37 mm
M103-1132 1.47 mm

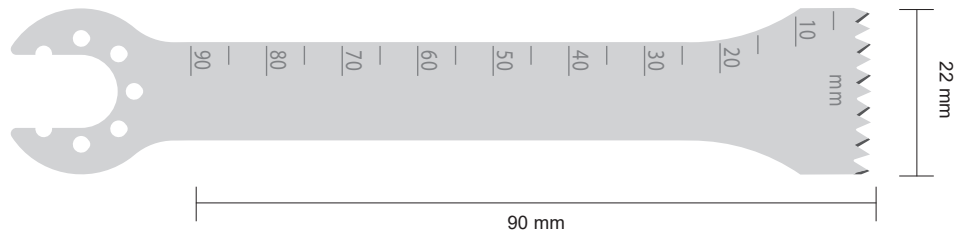


M103-1133 1 mm
M103-1134 1.19 mm
M103-1135 1.27 mm

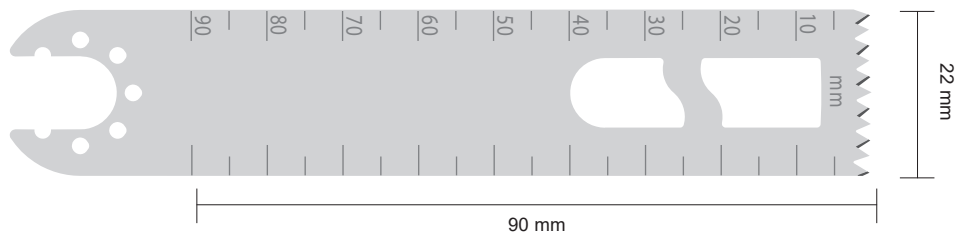




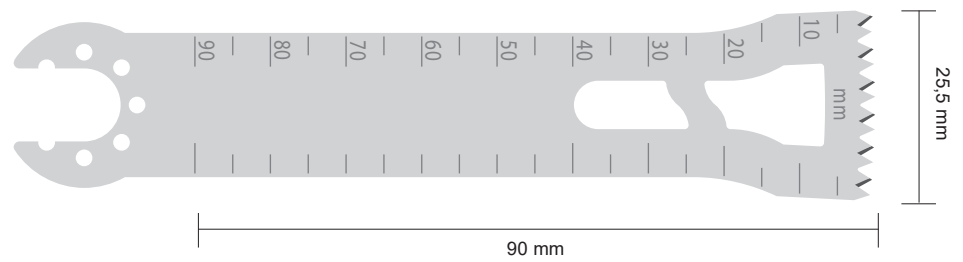
M103-1138
Material Thickness: 1.27 mm



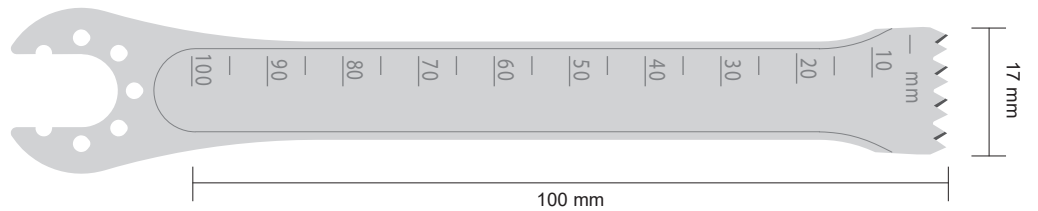
	Material Thickness
M103-1139	1 mm
M103-1140	1.27 mm



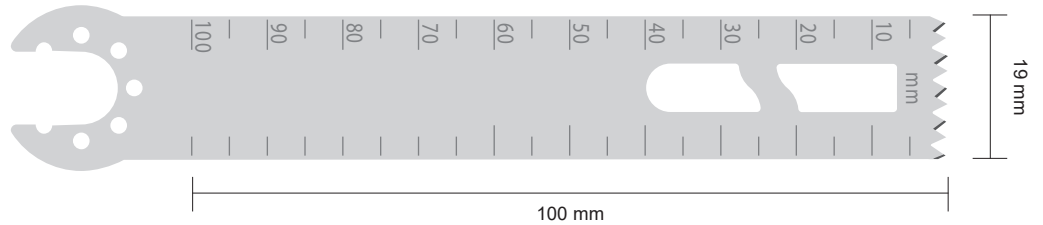
	Material Thickness
M103-1141	1 mm
M103-1142	1.19 mm
M103-1143	1.27 mm
M103-1144	1.37 mm
M103-1145	1.47 mm



M103-1146
Material Thickness: 1.27 mm



M103-1147
Material Thickness: 1.19 mm

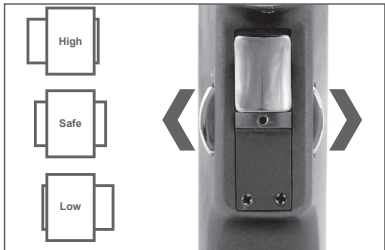


STERNUM SAW SYSTEM



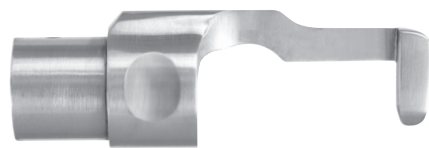
M206-240
Sternum saw system
(Without saw blades, guide and power box)

High-Low speed options
Steam sterilisable
11.000 - 14.000 cpm / \longleftrightarrow 4 mm
77 x 180 x 212 mm / 1040 g

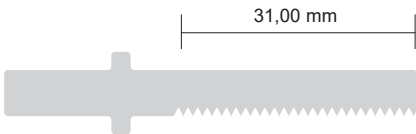


High and Low speed options in one-handpiece

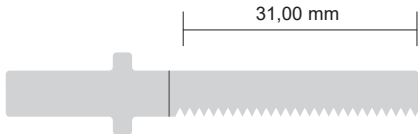
BLADES (Adult)



M103-715
Adult saw guide

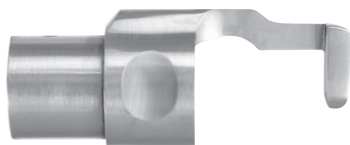


M103-709
Material Thickness : 0.60 mm
Cutting Thickness : 1.05 mm

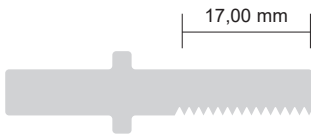


M103-710
Material Thickness : 0.80 mm
Cutting Thickness : 1.05 mm

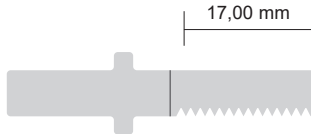
BLADES (Pediatric)



M103-716
Pediatric saw guide



M103-711
Material Thickness : 0.60 mm
Cutting Thickness : 0.60 mm



M103-712
Material Thickness : 0.80 mm
Cutting Thickness : 0.80 mm

OSCILLATING SAW SYSTEM

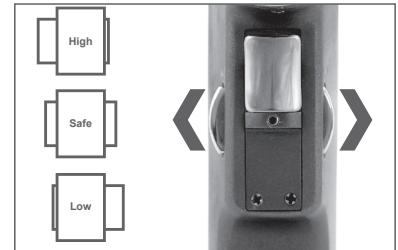
(Re-operation)



M206-300

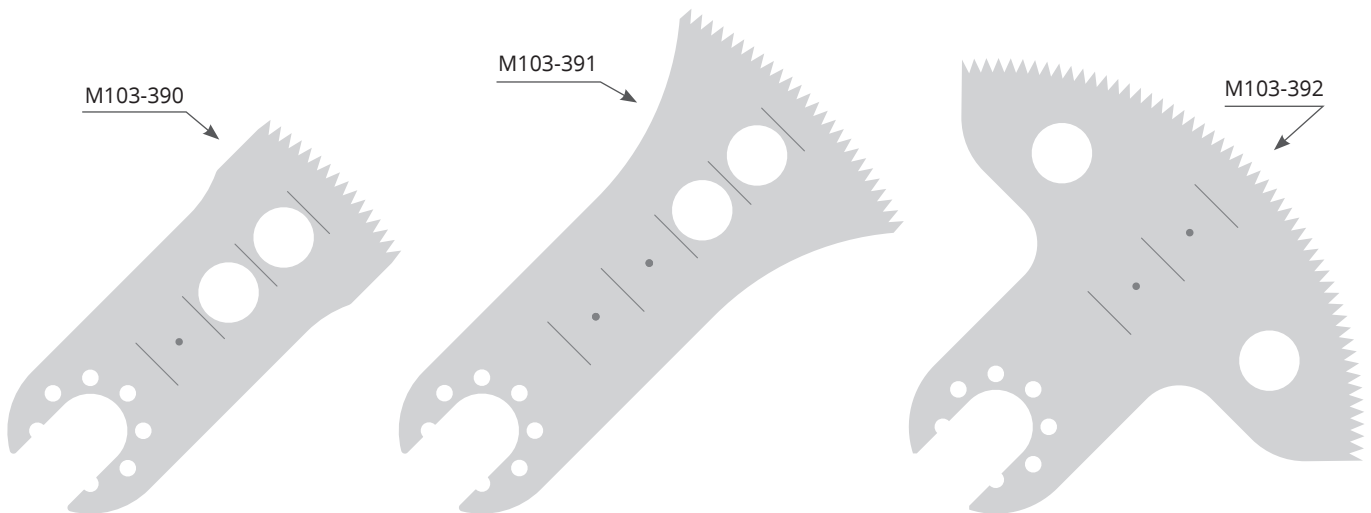
Oscillating saw system
(Without saw blades and power box)

High-Low speed options
Steam sterilisable
11.000 - 14.000 cpm / $\angle 4^\circ 50'$
77 x 158 x 218 mm / 930 g



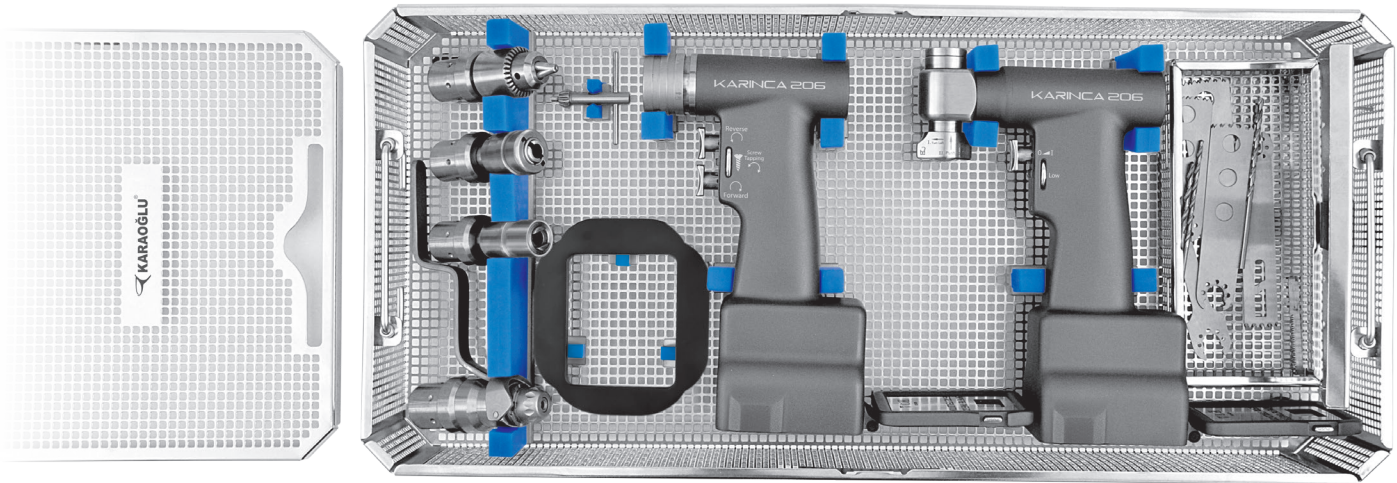
High and Low speed options in one-handpiece

BLADES (for M206-300)



Code	Length	Width	Material Thickness	Cutting Thickness
M103-390	35 mm	25 mm	0.80 mm	1.20 mm
M103-391	50 mm	40 mm	0.80 mm	1.20 mm
M103-392	35 mm	75 mm	0.80 mm	1.20 mm

ORTHOPEDIC SET



M206-1001

Orthopedic Set

Set Content

M206-200	Karinca Drill-Reamer Handpiece
M206-410	Power box with battery pack (2 pcs)
M206-212	Autoclavable sterile funnel for aseptic battery loading
M206-227	Charger unit for 2 batteries
M206-309	Drill attachment with keyed chuck
M7-502	Drill bit
M7-504	Drill bit
M7-250	Chuck key for M206-309
M206-300	Karinca Sagittal saw Handpiece
M103-1117	Sagittal saw blade
M103-1146	Sagittal saw blade
M206-320	Acetabular reamer attachment
M206-330	Reamer attachment for wire and pin
M206-352	Quick - action chuck (K-wire Driver)
M14-816	Spray oil
K3-2723	Basket with silicone fixations
K6-120	Perforated lid
K6-107	Box, non perforated



M206-410
Power box
with battery pack
(2 pcs)



M206-227
Charger unit for 2 batteries

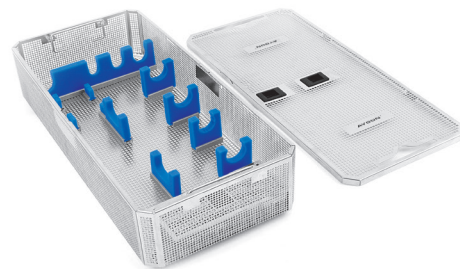


M14-816
Spray oil, for motor and additional pcs.
After cleaning of every use. Oil inside of all moving pcs of device by spraying method and run the device for 2-3 seconds.



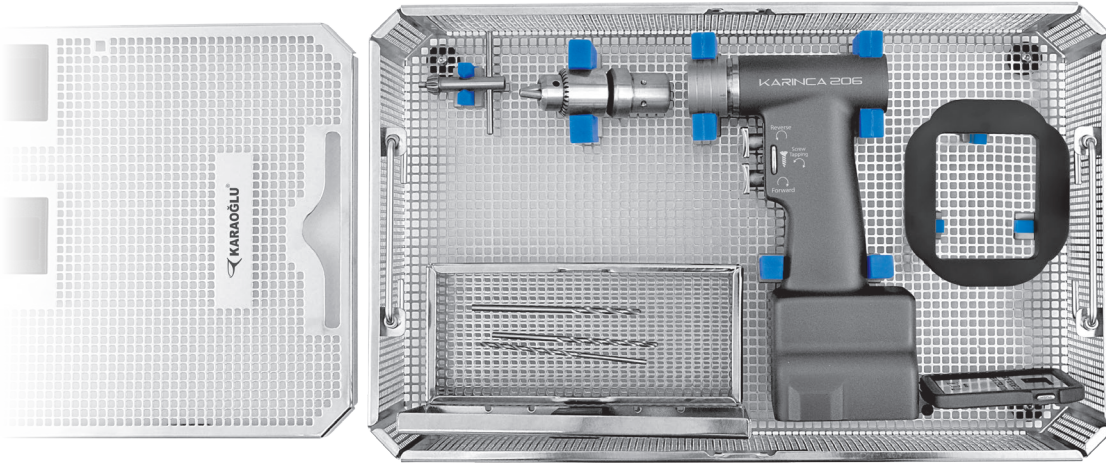
K6-120
Perforated Lid, Standard Model
585 x 285 mm

K6-107
Box, non perforated
600 x 272 x 138 mm



K3-2723
Basket with silicone fixations
546 x 259 x 114 mm

DRILL SET



M206-1005

Drill Set

Set Content

M206-200	Karinca Drill-Reamer Handpiece
M206-410	Power box with battery pack
M206-212	Autoclavable sterile funnel for aseptic battery loading
M206-226	Charger unit for 1 battery
M206-309	Drill attachment with keyed chuck
M7-502	Drill bit
M7-504	Drill bit
M7-250	Chuck key for M206-309
M14-816	Spray oil
K3-2731	Basket with silicone fixations
K6-340	Perforated lid
K6-307	Box, non perforated



M206-410
Power box
with battery pack



M206-226
Charger unit for 1 battery

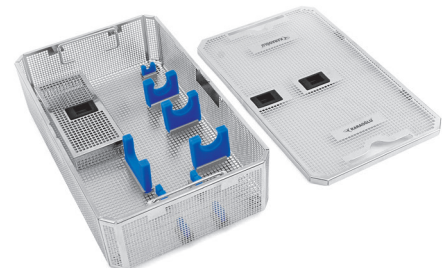


M14-816
Spray oil, for motor and additional pcs.
After cleaning of every use. Oil inside of all
moving pcs of device by spraying method
and run the device for 2-3 seconds.



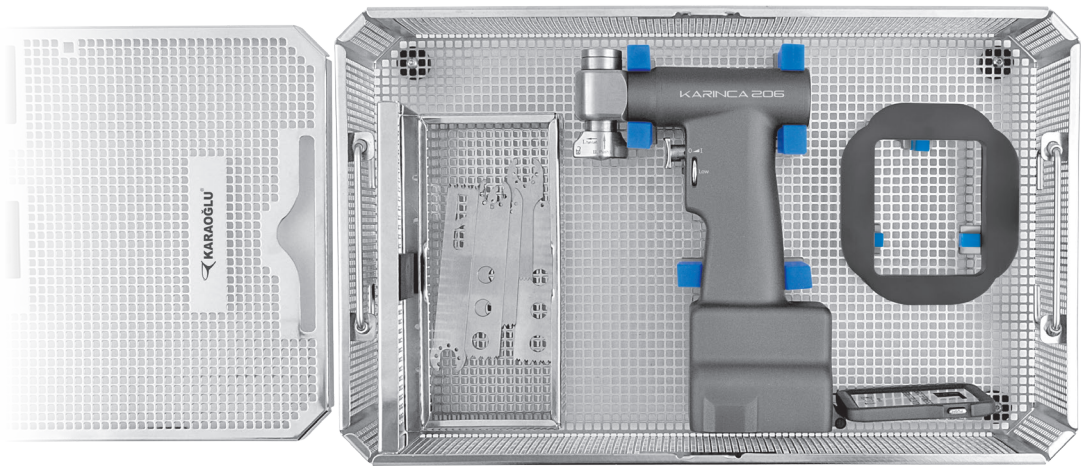
K6-340
Perforated Lid, Standard Model
460 x 285 mm

K6-307
Box, non perforated
475 x 272 x 138 mm



K3-2731
Basket with silicone fixations
411 x 259 x 114 mm

SAGITTAL SAW SET



M206-1007 Sagittal Saw Set

Set Content

M206-300	Karinca Sagittal saw Handpiece
M206-410	Power box with battery pack
M206-212	Autoclavable sterile funnel for aseptic battery loading
M206-226	Charger unit for 1 battery
M103-1117	Sagittal saw blade
M103-1146	Sagittal saw blade
M14-816	Spray oil
K3-2731-S2	Basket with silicone fixations
K6-340	Perforated lid
K6-307	Box, non perforated



M206-410
Power box
with battery pack



M206-226
Charger unit for 1 battery

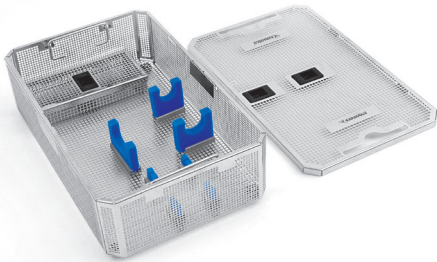


M14-816
Spray oil, for motor and additional pcs.
After cleaning of every use. Oil inside of all moving pcs of device by spraying method and run the device for 2-3 seconds.



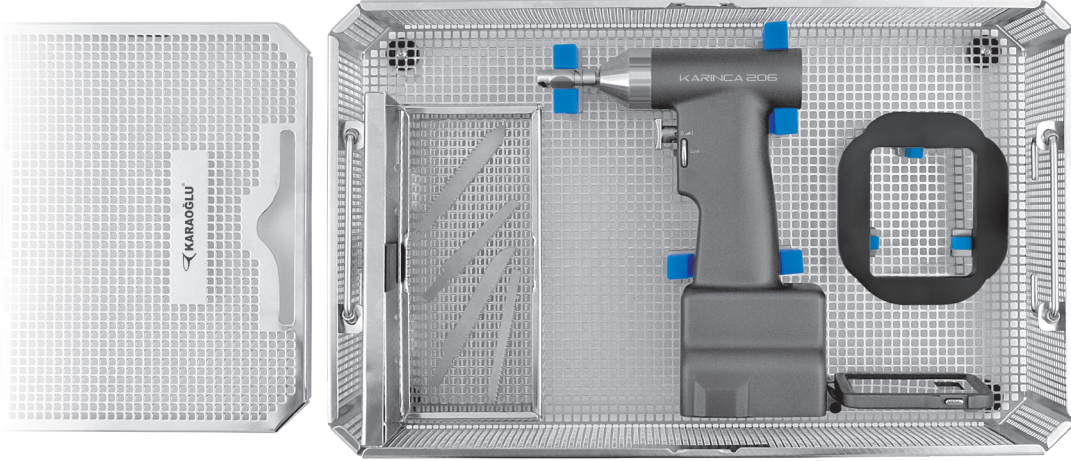
K6-340
Perforated Lid, Standard Model
460 x 285 mm

K6-307
Box, non perforated
475 x 272 x 138 mm



K3-2731-S2
Basket with silicone fixations
411 x 259 x 114 mm

RECIPROCATING SAW SET



M206-1013 Reciprocating Saw Set

Set Content

M206-235	Karinca Reciprocating saw Handpiece
M206-410	Power box with battery pack
M206-212	Autoclavable sterile funnel for aseptic battery loading
M206-226	Charger unit for 1 battery
M103-239	Reciprocating saw blade
M14-816	Spray oil
K3-2731-S3	Basket with silicone fixations
K6-340	Perforated lid
K6-307	Box, non perforated



M206-410
Power box
with battery pack



M206-226
Charger unit for 1 battery



M14-816
Spray oil, for motor and additional pcs.
After cleaning of every use. Oil inside of all moving pcs of device by spraying method and run the device for 2-3 seconds.



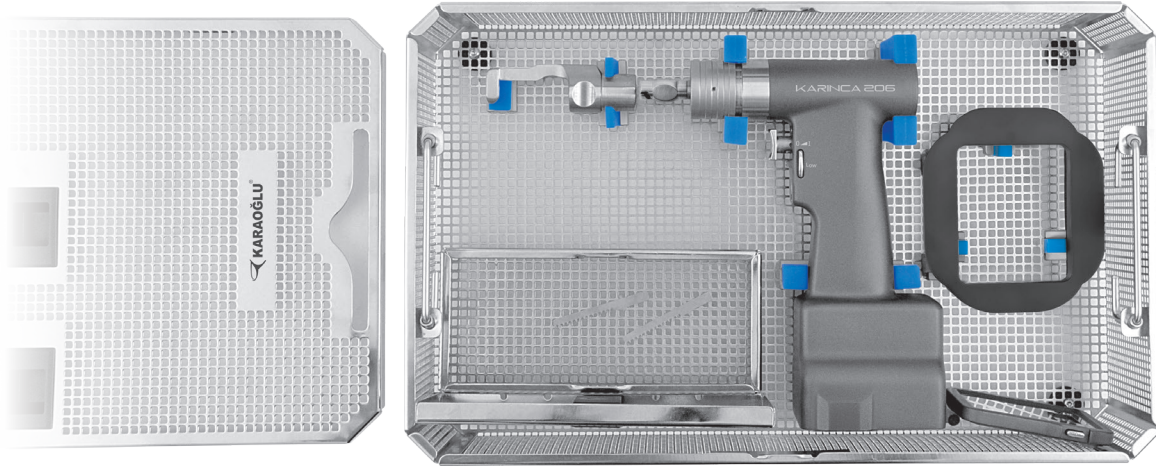
K6-340
Perforated Lid, Standard Model
460 x 285 mm

K6-307
Box, non perforated
475 x 272 x 138 mm



K3-2731-S3
Basket with silicone fixations
411 x 259 x 114 mm

STERNAL SAW SET



M206-1009 Sternal Saw Set

Set Content

M206-240	Karinca Sternum saw Handpiece
M206-410	Power box with battery pack
M206-212	Autoclavable sterile funnel for aseptic battery loading
M206-226	Charger unit for 1 battery
M103-715	Adult saw guide
M103-710	Adult saw blade
M14-816	Spray oil
K3-2731-S4	Basket with silicone fixations
K6-340	Perforated lid
K6-307	Box, non perforated



M206-410
Power box
with battery pack



M206-226
Charger unit for 1 battery



M14-816
Spray oil, for motor and additional pcs.
After cleaning of every use. Oil inside of all moving pcs of device by spraying method and run the device for 2-3 seconds.



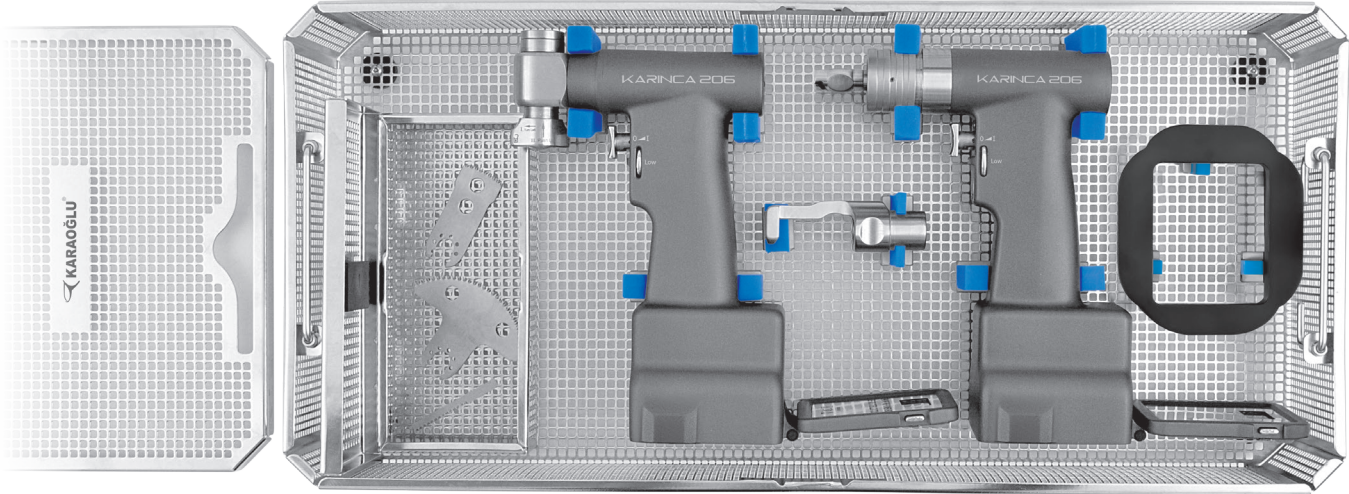
K6-340
Perforated Lid, Standard Model
460 x 285 mm

K6-307
Box, non perforated
475 x 272 x 138 mm



K3-2731-S4
Basket with silicone fixations
411 x 259 x 114 mm

CARDIO VASCULAR SET



M206-1011 Cardio Vascular Set

Set Content

M206-240	Karinca Sternum saw Handpiece
M206-410	Power box with battery pack (2 pcs)
M206-212	Autoclavable sterile funnel for aseptic battery loading
M206-227	Charger unit for 2 batteries
M206-300	Karinca Re-Operation saw Handpiece
M103-715	Adult saw guide
M103-710	Adult saw blade
M103-392	Re-Operation saw blade
M14-816	Spray oil
K3-2723-S2	Basket with silicone fixations
K6-120	Perforated lid
K6-107	Box, non perforated



M206-410
Power box
with battery pack
(2 pcs)



M206-227
Charger unit for 2 batteries



M14-816
Spray oil, for motor and additional pcs.
After cleaning of every use. Oil inside of all moving pcs of device by spraying method and run the device for 2-3 seconds.



K6-120
Perforated Lid, Standard Model
585 x 285 mm

K6-107
Box, non perforated
600 x 272 x 138 mm



K3-2723-S2
Basket with silicone fixations
546 x 259 x 114 mm

CONTAINER SET FOR STERILIZATION



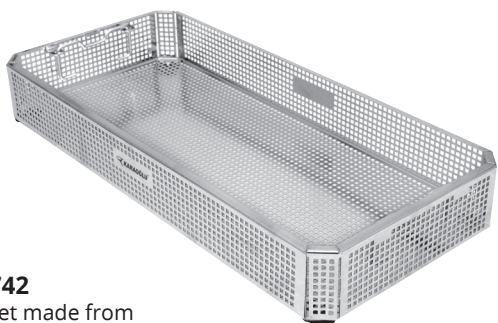
K8-123V
Lid, B3 Barrier Model
585 x 285 mm

K6-107
Container, non perforated
600 x 272 x 138 mm



K8-343V
Lid, B3 Barrier Model
460 x 285 mm

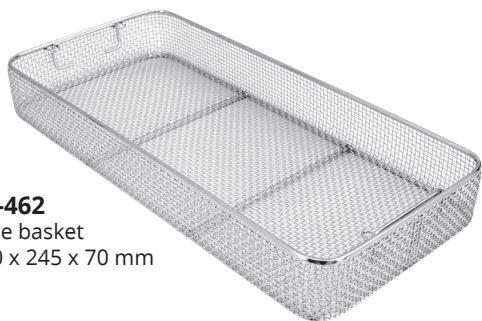
K6-307
Container, non perforated
475 x 272 x 138 mm



K3-742
Basket made from
stainless steel sheet (with stand)
540 x 253 x 80 mm



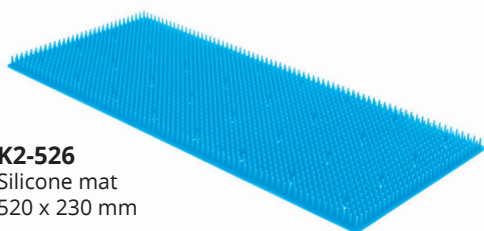
K3-750
Basket made from
stainless steel sheet (with stand)
405 x 253 x 80 mm



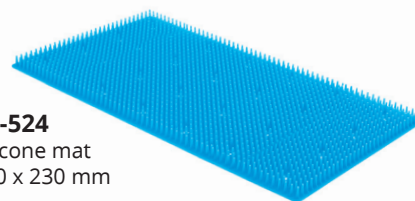
K2-462
Wire basket
540 x 245 x 70 mm



K2-1502
Wire basket
405 x 245 x 70 mm



K2-526
Silicone mat
520 x 230 mm



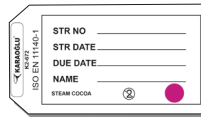
K2-524
Silicone mat
380 x 230 mm

		code	color
Thoracotomy	Basic Set	K2-700	Red
Basic Set	Thoracotomy	K2-701	Blue
Thoracotomy	Basic Set	K2-702	Green
Basic Set	Thoracotomy	K2-703	Yellow
		K2-704	Grey
		K2-705	Black
		K2-706	Pink
		K2-707	Brown

Identification labels (aluminium)
Coloured identification labels
Engraved to your specifications
Maximum 16 letters



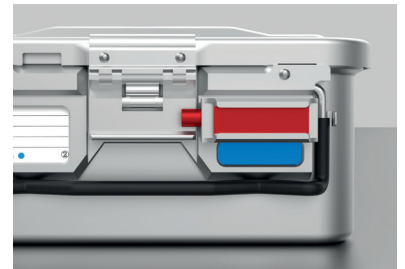
K2-673
Labels (paper)
100 pcs. With indicator.
For small size and special
containers



K2-672
Labels (paper)
100 pcs. With indicator.
For full and half size containers



K1-900
Modular Auto Lock Mechanism (2 Pcs)



K2-660 red
Security seal
100 pcs made of plastic



K2-740
Single use paper
filter 100 pcs
with indicator.
KARAOĞLU mark.



KARAOĞLU CERRAHİ ALETLER

İstiklal Mah. İlkadim Sanayi Sitesi 58. Sok.
No:77 TEKKEKÖY/SAMSUN

T : +90 (362) 238 6104 - +90 555 013 6105
F : +90 (362) 238 5591

info@karaoglucerrahi.com.tr
karaoglucerrahi.com.tr